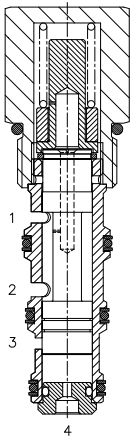


**DG-TCB PRESSURE COMPENSATING VALVE, RESTRICTIVE TYPE WITH BYPASS**



**DESCRIPTION**

10 size, 7/8-14 thread, "Delta" series, pressure compensating valve, restrictive type with bypass.

**OPERATION**

The DG-TCB allows pressure compensated or proportional flow from (1) to (2) regulated by the pressure differential across (1) and (4) with a bypass of (4) to (3). The spring chamber is constantly connected at (1).

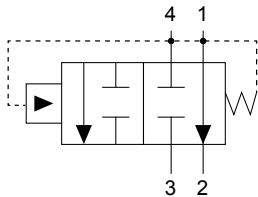
**FEATURES**

- Hardened parts for longer life.
- Industry common cavity.



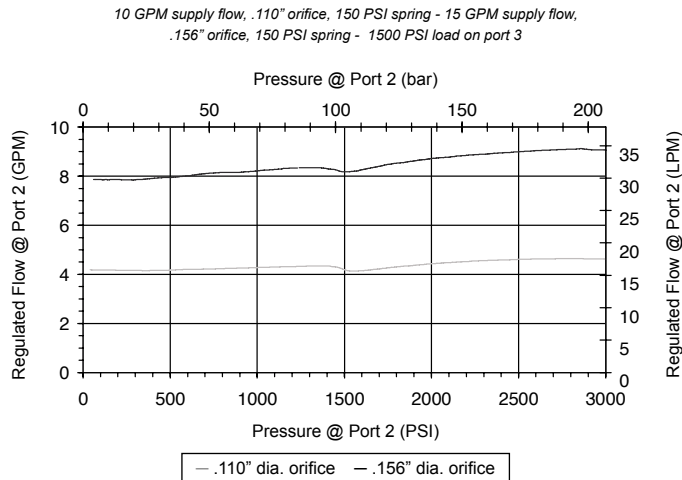
Bypass line (3) can be pressurized.

**HYDRAULIC SYMBOL**



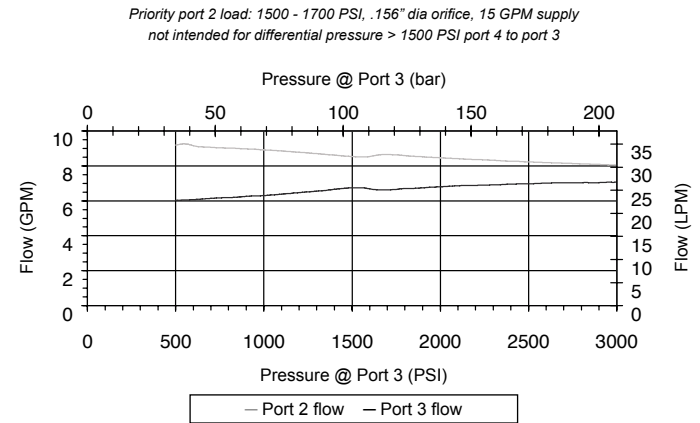
**PERFORMANCE**

Actual Test Data (Cartridge Only)



**VALVE SPECIFICATIONS**

Nominal Flow	10 GPM (38 LPM)
Rated Operating Pressure	3500 PSI (241 bar)
Typical Internal Leakage (150 SSU)	5 cu in/min (82 ml/min) per path
Viscosity Range	36 to 3000 SSU (3 to 647 cSt)
Filtration	ISO 18/16/13
Media Operating Temp. Range	-40° to 250°F (-40° to 120°C)
Weight	.38 lbs (.17 kg)
Operating Fluid Media	General Purpose Hydraulic Fluid
Cartridge Torque Requirements	30 ft-lbs (40.6 Nm)
Cavity	DELTA 4W
Cavity Tools Kit (form tool, reamer, tap)	40500002
Seal Kit	21191214



**WARNING:** the specifications/application data shown in our catalogs and data sheets are intended only as a general guide for the product described (herein). Any specific application should not be undertaken without independent study, evaluation, and testing for suitability.



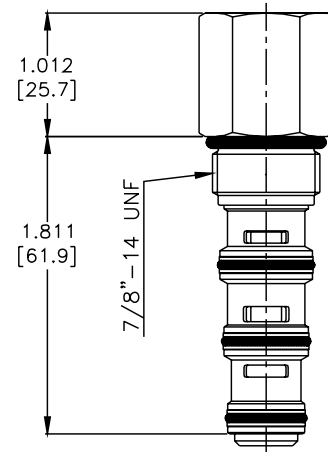
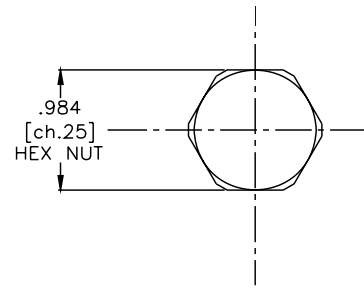
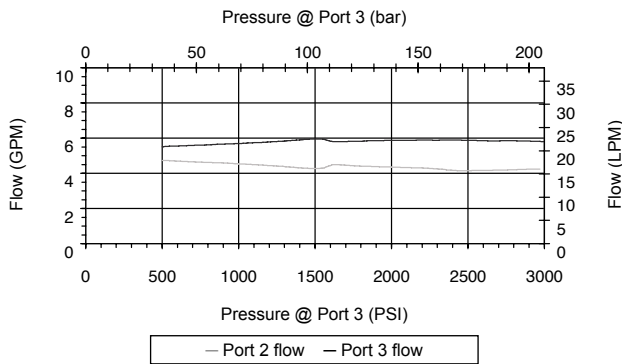
4484 Boeing Drive Rockford, IL 61109 • USA • Phone +1 (815) 397-6628 • Fax +1 (815) 397-2526  
 mail: delta@delta-power.com • www.delta-power.com



Via Malavolti, 36 • 41122 Modena • ITALY • Phone +39 (059) 254895 • Fax +39 (059) 253512  
 mail: tecnord@tecnord.com • www.tecnord.com

**DIMENSIONS**

Priority port 2 load: 1500 - 1700 PSI, .110" dia orifice, 10 GPM supply  
not intended for differential pressure > 1500 PSI port 4 to port 3



(for bodies style and sizes see section "Accessories")

**ORDERING INFORMATION**

DG-TCB - - -

**OPTIONS**

- Buna Standard **00**
- Viton Standard **V0**

**BODIES**

- Blank** Without Body
- N** 3/8" BSP Ports
- S** #6 SAE Ports

**PRESSURE SETTINGS**

- 014** 14 bar (200 PSI)
- 020** 20 bar (285 PSI)
- 032** 32 bar (460 PSI)

Differential Pressure Across  
External Controlling Orifice

W 12 / 2020

**WARNING:** the specifications/application data shown in our catalogs and data sheets are intended only as a general guide for the product described (herein). Any specific application should not be undertaken without independent study, evaluation, and testing for suitability.



4484 Boeing Drive Rockford, IL 61109 • USA • Phone +1 (815) 397-6628 • Fax +1 (815) 397-2526  
mail: delta@delta-power.com • www.delta-power.com



Via Malavolti, 36 • 41122 Modena • ITALY • Phone +39 (059) 254895 • Fax +39 (059) 253512  
mail: tecnord@tecnord.com • www.tecnord.com