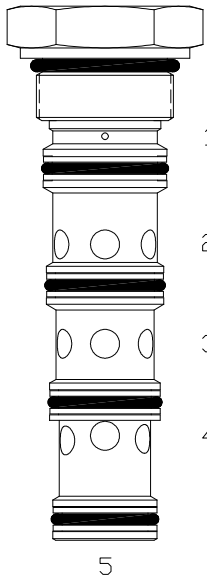


SO-PDD STEERING PRIORITY FLOW CONTROL VALVE WITH DYNAMIC LOAD SENSE**DESCRIPTION**

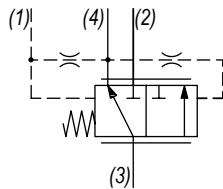
16 size, 1 5/16-12 thread, "Super" series, steering priority flow control valve with dynamic load sense.

OPERATION

The SO-PDD allows priority flow from (3) to (4) regardless of load pressure at either port (2) or port (4). Excess flow bypasses out (2). Port (1) is the load sense port.

FEATURES

- Hardened cage and spool for long life.
- Industry common cavity.

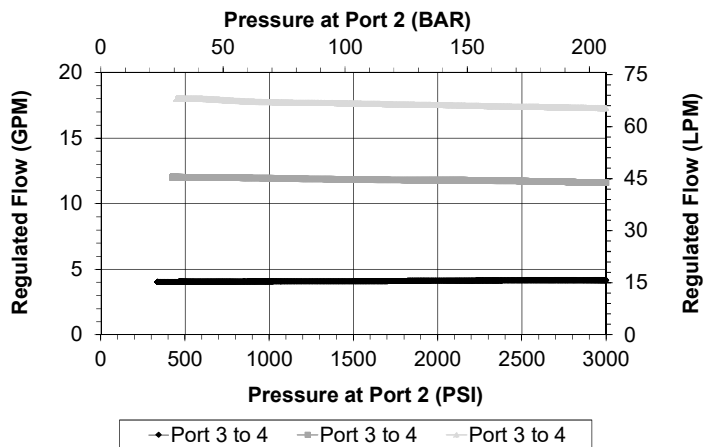
HYDRAULIC SYMBOL**PERFORMANCE**

Actual Test Data (Cartridge Only)

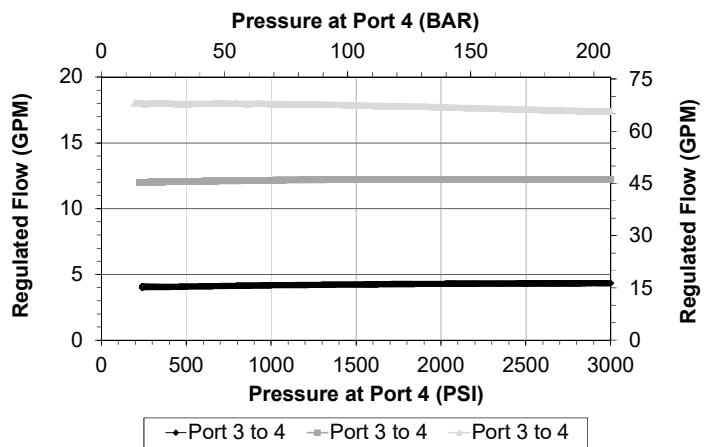
VALVE SPECIFICATIONS

Max Regulated Flow	20 GPM (76 LPM)
Rated Operating Pressure	3000 PSI (207 bar)
Viscosity Range	36 to 3000 SSU (3 to 647 cSt)
Filtration	ISO 18/16/13
Media Operating Temp. Range	-40° to 250°F (-40° to 120°C)
Weight	1.05 lbs (.48 kg)
Operating Fluid Media	General Purpose Hydraulic Fluid
Cartridge Torque Requirements	90 ft-lbs (122 Nm)
Cavity	SUPER 5WS
Cavity Form Tool (Finishing)	40500020
Seal Kit	21191410

Bypass port 2 loaded, priority port 4 unloaded



Priority port 4 loaded, bypass port 2 unloaded



WARNING: the specifications/application data shown in our catalogs and data sheets are intended only as a general guide for the product described (herein). Any specific application should not be undertaken without independent study, evaluation, and testing for suitability.

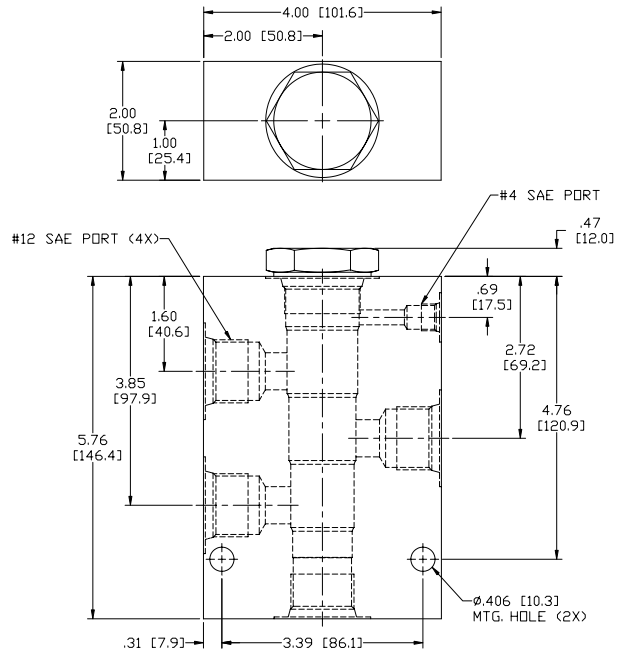
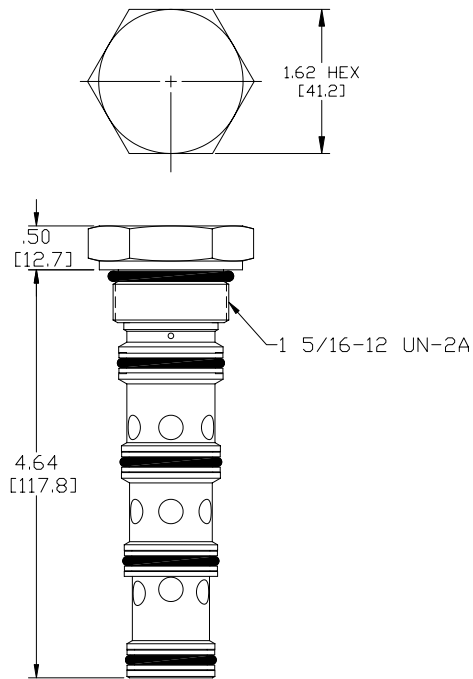


4484 Boeing Drive Rockford, IL 61109 • USA • Phone +1 (815) 397-6628 • Fax +1 (815) 397-2526
mail: delta@delta-power.com • www.delta-power.com

TECNORD

Via Malavolti, 36 • 41122 Modena • ITALY • Phone +39 (059) 254895 • Fax +39 (059) 253512
mail: tecnord@tecnord.com • www.tecnord.com

DIMENSIONS



Body Weight: 3.76 lbs (1.62 kg)

ORDERING INFORMATION

SO-PDD		-	-	-
<u>OPTIONS</u>				<u>BODIES</u>
Buna Standard	00			Blank Without Body
Viton Standard	V0			N 3/4 NPTF Ports
				S #12 SAE Ports
			<u>PRESSURE SETTING</u>	
			0120	120 PSI
			0300	300 PSI

W 6 / 2020

WARNING: the specifications/application data shown in our catalogs and data sheets are intended only as a general guide for the product described (herein). Any specific application should not be undertaken without independent study, evaluation, and testing for suitability.



4484 Boeing Drive Rockford, IL 61109 • USA • Phone +1 (815) 397-6628 • Fax +1 (815) 397-2526
mail: delta@delta-power.com • www.delta-power.com

TECNORD

Via Malavolti, 36 • 41122 Modena • ITALY • Phone +39 (059) 254895 • Fax +39 (059) 253512
mail: tecnord@tecnord.com • www.tecnord.com