

FPR-PWM-L2S PROPORTIONAL ROLLER SWITCH WITH PWM DRIVER

FEATURES

- Mini proportional roller switch with optimum ergonomic design for panel-mounting.
- High performance hall effect sensor circuitry.
- PWM electronic driver integrated into the roller for remote control of a dual-coil proportional solenoid valve.

MECHANICAL SPECIFICATIONS

Rotation angle:	±30°
Main body material:	acetal resin / teflon compound
Colours available:	yellow, grey, blue
Rubber gaiter material:	EPDM / 35-45 shore - A
Operating temperature range:	-25°C / +85°C
Environmental protection:	IP 68 (above panel)
Life:	> 5.000.000 cycles

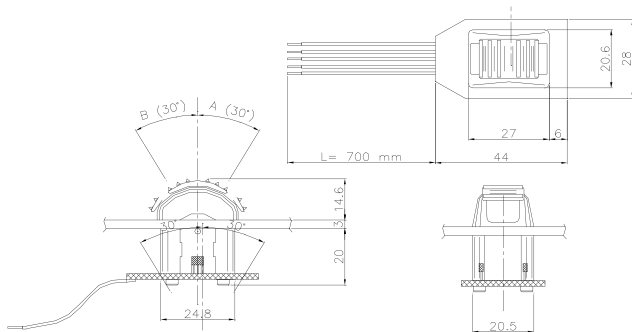
ELECTRICAL SPECIFICATIONS

Supply voltage:	8÷32 VDC
Current consumption with no load:	100 mA
PWM dither frequency:	100 Hz
Wire lenght:	700 mm
Current output range (PWM):	100÷1500 mA @ 12 VDC
Connection type: flying leads =	GLX 0.5 sqmm
connector =	molex Minifit 6 poles P.N. 5559-6P

ELECTRICAL CONNECTIONS

- (1) Red: +Battery
- (2) Black: -Battery (GND)
- (3) Orange: PWM Valve A+
- (4) Gray: PWM Valve B+
- (5) White: PWM A- / B- (common)
- (6) Not used

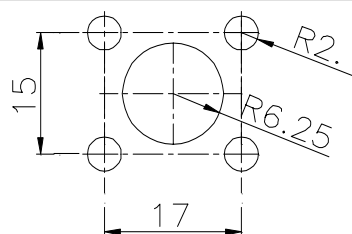
OVERALL DIMENSIONS



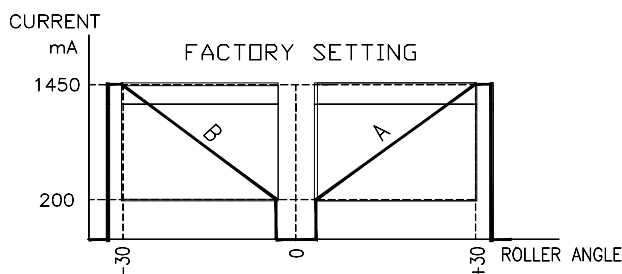
FPR ORDERING INFORMATION: see page JK7



PANEL CUT-OUT



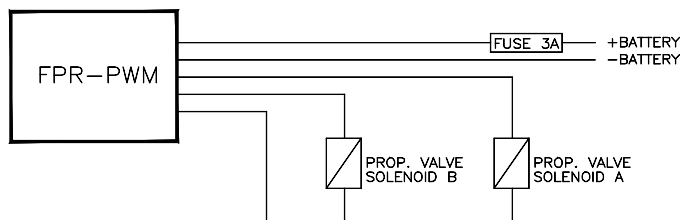
PWM OUTPUT CHARACTERISTIC EXAMPLE



The following values are factory set:

- I_{min} (minimum output current)
- I_{max} (maximum output current)
- Dither

APPLICATION EXAMPLE



Ordering Code

23.0409.160 (I_{min} = 200mA, I_{max} = 1500mA, PWM = 100Hz)

W/11 / 2020

WARNING: the specifications/application data shown in our catalogs and data sheets are intended only as a general guide for the product described (herein). Any specific application should not be undertaken without independent study, evaluation, and testing for suitability.



4484 Boeing Drive Rockford, IL 61109 • USA • Phone +1 (815) 397-6628 • Fax +1 (815) 397-2526
 mail: delta@delta-power.com • www.delta-power.com



Via Malavolti, 36 • 41122 Modena • ITALY • Phone +39 (059) 254895 • Fax +39 (059) 253512
 mail: tecnord@tecnord.com • www.tecnord.com