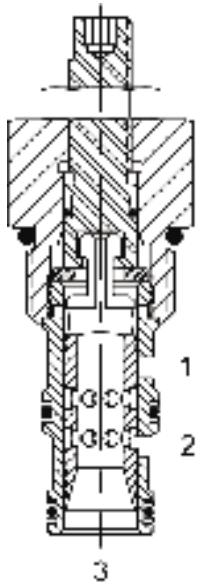


**DF-M3A** MANUAL ROTARY SPOOL VALVE, 3 WAY 2 POSITION**DESCRIPTION**

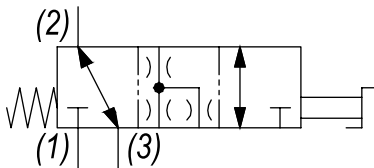
10 size, 7/8-14 thread, "Delta" series, 3 way 2 position, manual rotary spool valve.

**OPERATION**

The DF-M3A when rotated fully to the clockwise position, the cartridge directs flow from (3) to (2) or (2) to (3) and blocks flow at (1). When rotated fully to the counterclockwise position, the cartridge directs flow from (1) to (3) or (3) to (1) and blocks flow at (2). All ports are closed in transition.

**FEATURES**

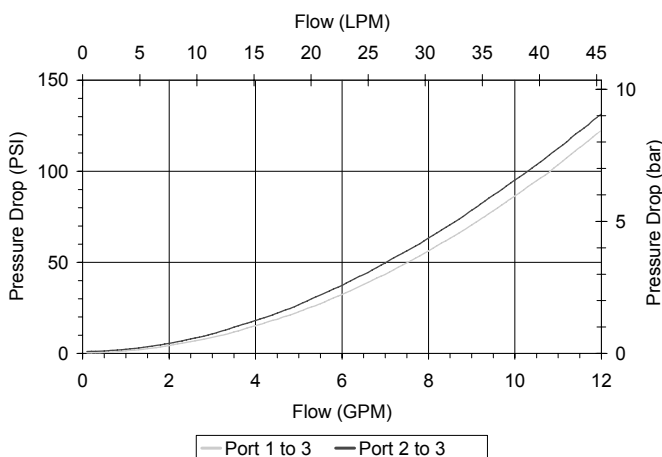
- Hardened parts for long life.
- Industry common cavity.

**HYDRAULIC SYMBOL**

May be used as metering product. Valve has approximately 3.5 turns adjustment from extreme clockwise fully to counterclockwise positions. See chart for pressure drop in both positions.

**PERFORMANCE**

Actual Test Data (Cartridge Only)

**VALVE SPECIFICATIONS**

Nominal Flow	12 GPM (45 LPM)
Rated Operating Pressure	3000 PSI (207 bar)
Typical Internal Leakage (150 SSU)	5 cu in/min (82 ml/min)
Viscosity Range	36 to 3000 SSU (3 to 647 cSt)
Filtration	ISO 18/16/13
Media Operating Temp. Range	-40° to 250°F (-40° to 120°C)
Weight	.49 lbs (.22 kg)
Operating Fluid Media	General Purpose Hydraulic Fluid
Cartridge Torque Requirements	30 ft-lbs (40.6 Nm)
Cavity	DELTA 3W
Cavity Form Tool (Finishing)	40500001
Seal Kit	21191210

**WARNING:** the specifications/application data shown in our catalogs and data sheets are intended only as a general guide for the product described (herein). Any specific application should not be undertaken without independent study, evaluation, and testing for suitability.

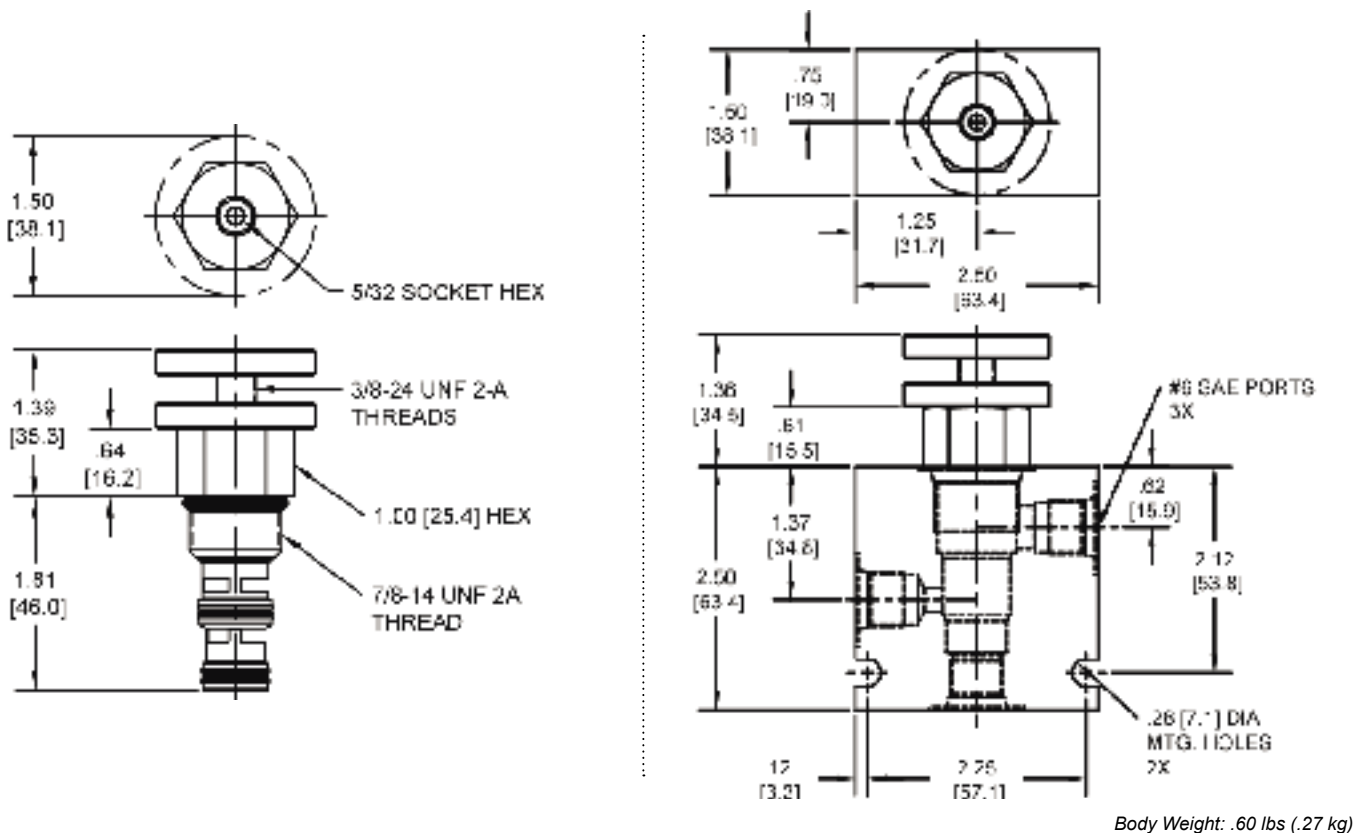


4484 Boeing Drive Rockford, IL 61109 • USA • Phone +1 (815) 397-6628 • Fax +1 (815) 397-2526  
mail: delta@delta-power.com • [www.delta-power.com](http://www.delta-power.com)

**TECNORD**

Via Malavolti, 36 • 41122 Modena • ITALY • Phone +39 (059) 254895 • Fax +39 (059) 253512  
mail: [tecnord@tecnord.com](mailto:tecnord@tecnord.com) • [www.tecnord.com](http://www.tecnord.com)

DIMENSIONS



ORDERING INFORMATION

DF-M3A	-	-	-
		<b>OPTIONS</b>	<b>BODIES</b>
		Buna, Standard <b>00</b>	Blank Without Body
		Viton, Standard <b>V0</b>	<b>N</b> 1/4" NPTF Ports
		Buna, Knob <b>0K</b>	<b>S</b> #6 SAE Ports
		Viton, Knob <b>VK</b>	