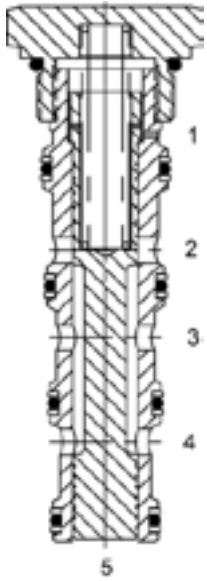


SO-PTS PILOT TO SHIFT, 3 WAY VALVE, OPEN TRANSITION



DESCRIPTION

16 size, 1 5/16 -12 thread, "Super" series, pilot to shift, 3 way valve, open transition.

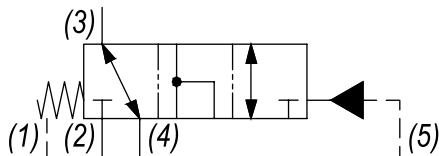
OPERATION

In neutral the SO-PTS allows flow between ports (3) and (4), port (2) is blocked. With application of a remote pilot signal at (5), the valve's spool shifts to allow flow between ports (2) and (3), while port (4) is blocked. During transition ports (2), (3), and (4) are open. The spring chamber is vented to the tank through port (1). The vented spring chamber allows the valve to be fully pressurized at ports (2), (3), and (4) without affecting required pilot pressure. Pressure at (1) will affect required pilot pressure.

FEATURES

- Hardened parts for long life.
- Industry common cavity.

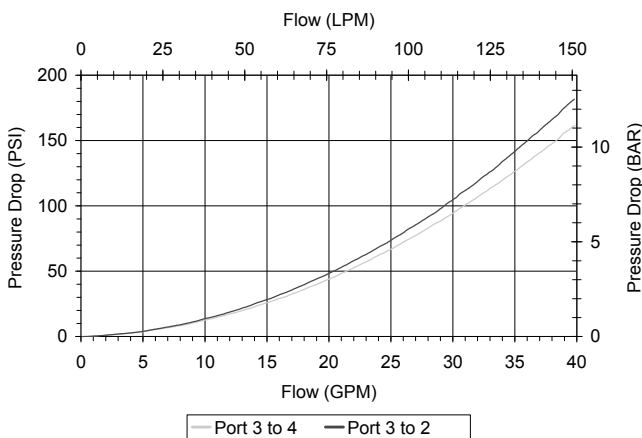
HYDRAULIC SYMBOL



A rate limiting orifice less than .060" diameter is recommended at port (5).

PERFORMANCE

Actual Test Data (Cartridge Only)



VALVE SPECIFICATIONS

Nominal Flow	40 GPM (151 LTR/M)
Rated Operating Pressure	3500 PSI (241 bar)
Typical Internal Leakage (150 SSU)	10 cu in/min (164 ml/min)
Viscosity Range	36 to 3000 SSU (3 to 647 cSt)
Filtration	ISO 18/16/13
Media Operating Temp. Range	-40° to 250°F (-40° to 120°C)
Weight	1.11 lbs (.50 kg)
Operating Fluid Media	General Purpose Hydraulic Fluid
Cartridge Torque Requirements	90 ft-lbs (122 Nm)
Cavity	SUPER 5W SHORT
Cavity Form Tool (Finishing)	40500020
Seal Kit	21191410

WARNING: the specifications/application data shown in our catalogs and data sheets are intended only as a general guide for the product described (herein). Any specific application should not be undertaken without independent study, evaluation, and testing for suitability.

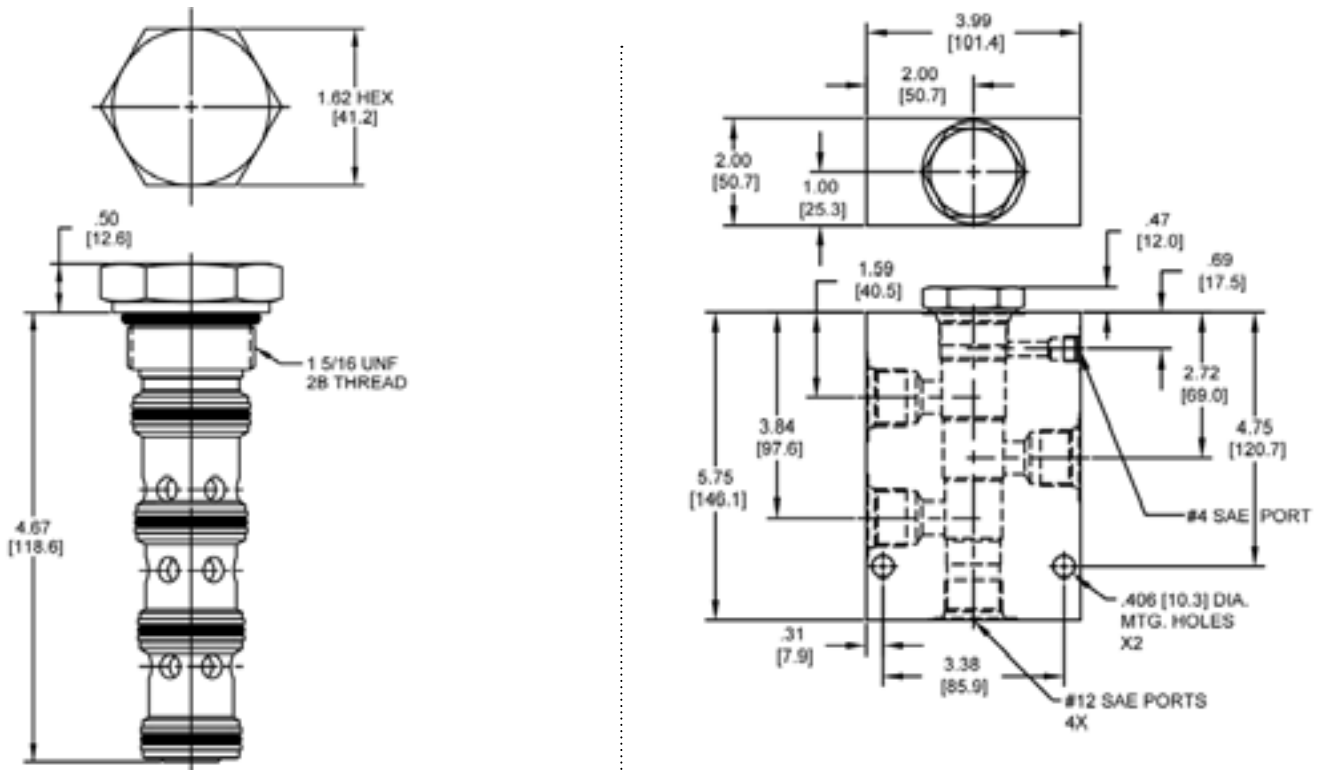


4484 Boeing Drive Rockford, IL 61109 • USA • Phone +1 (815) 397-6628 • Fax +1 (815) 397-2526
 mail: delta@delta-power.com • www.delta-power.com



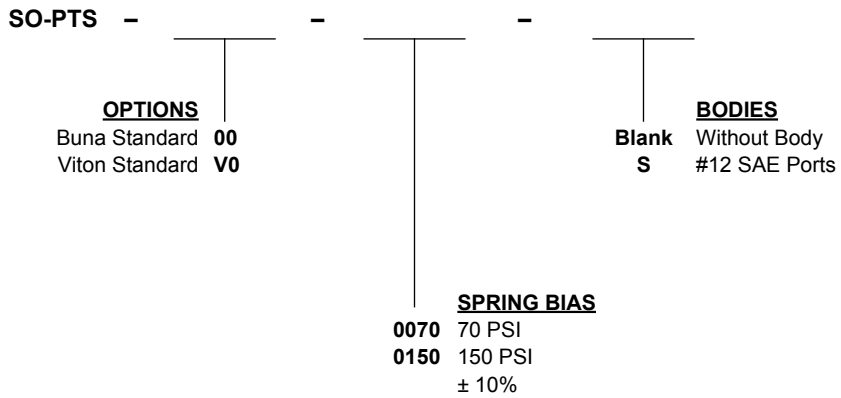
Via Malavolti, 36 • 41122 Modena • ITALY • Phone +39 (059) 254895 • Fax +39 (059) 253512
 mail: tecnord@tecnord.com • www.tecnord.com

DIMENSIONS



Body Weight: 3.76 lbs (1.62 kg)

ORDERING INFORMATION



W14 / 2018

WARNING: the specifications/application data shown in our catalogs and data sheets are intended only as a general guide for the product described (herein). Any specific application should not be undertaken without independent study, evaluation, and testing for suitability.



4484 Boeing Drive Rockford, IL 61109 • USA • Phone +1 (815) 397-6628 • Fax +1 (815) 397-2526
 mail: delta@delta-power.com • www.delta-power.com



Via Malavolti, 36 • 41122 Modena • ITALY • Phone +39 (059) 254895 • Fax +39 (059) 253512
 mail: tecnord@tecnord.com • www.tecnord.com