

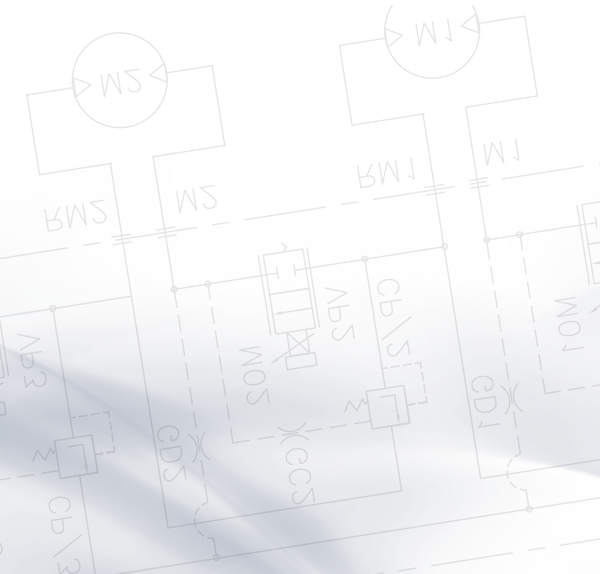
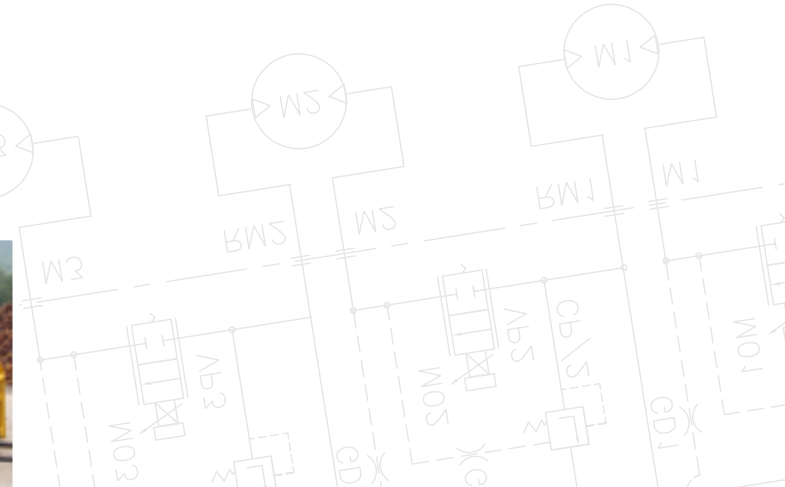


FIELDS OF EXPERTISE
APPLICATION EXAMPLES

OCTOBER 2018

TECNORD

SERVOCOMANDI E REGOLAZIONE



HARVESTERS page 3

SEED DRILLS page 4

FORK LIFTS page 5

AERIAL PLATFORMS page 10

RIMMERS & STRIPPERS page 14

CRANES page 15

EDGE CUTTERS page 18

SALT SPREADERS page 19

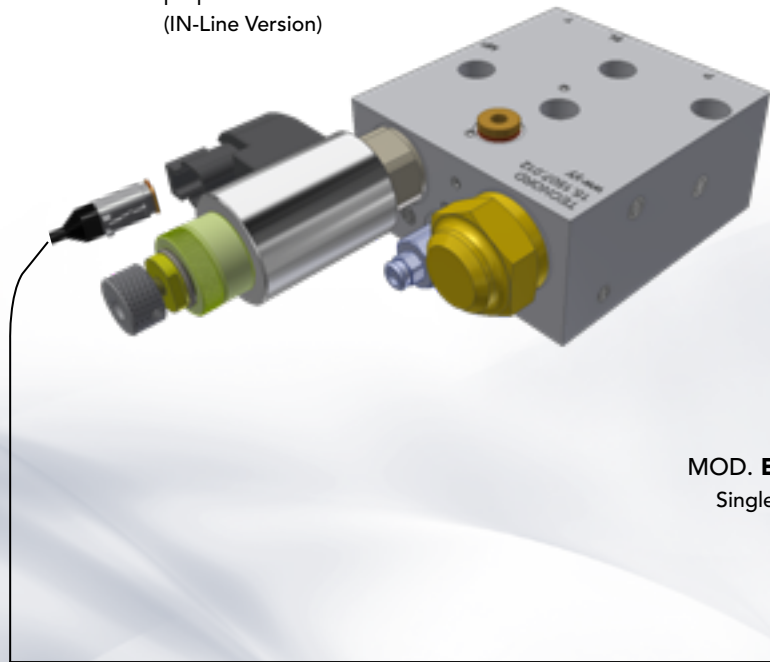
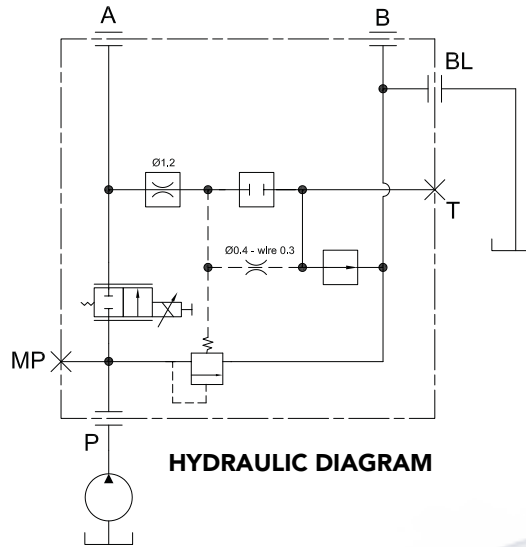
TELEHANDLERS page 20

CRAWLER VEHICLES page 22

VALV-O-MATIC SINGLE-FUNCTION CONTROL VALVE

IN-LINE 3 WAY, PRESSURE COMPENSATED
PROPORTIONAL FLOW CONTROL VALVE

MOD. RFP-3WPC-E_2A-ILV
3 way, pressure compensated
proportional flow control valve
(IN-Line Version)



MOD. EC-PWM-A1-MPC1
Single channel PWM driver



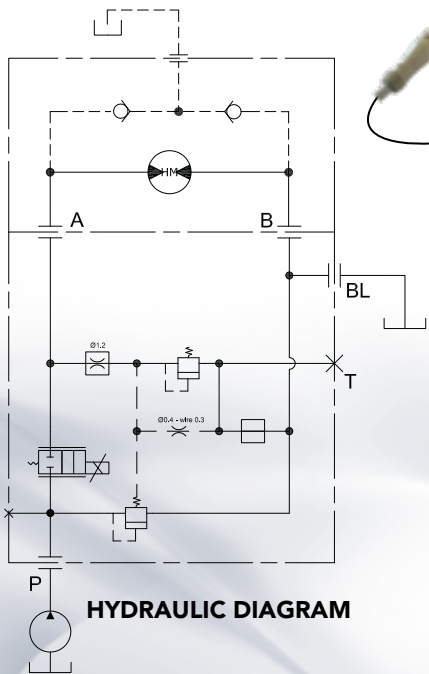
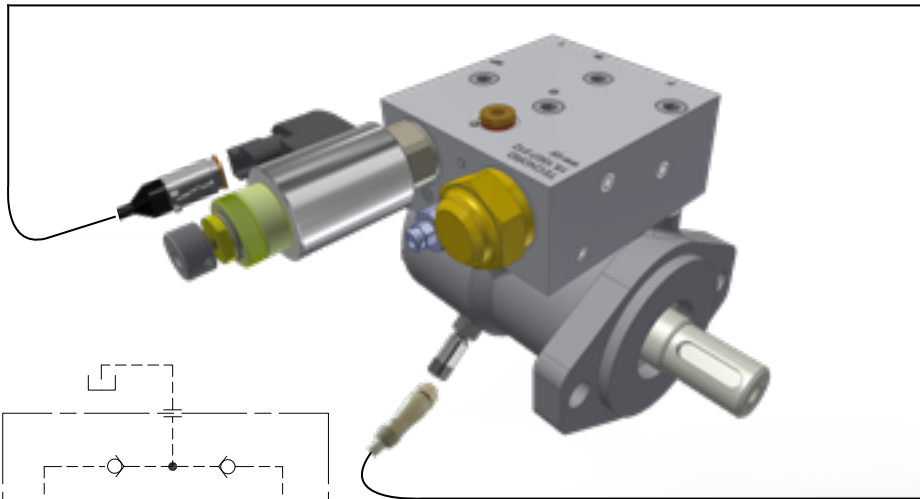
MOD. FTC-L1S
Unidirectional control lever



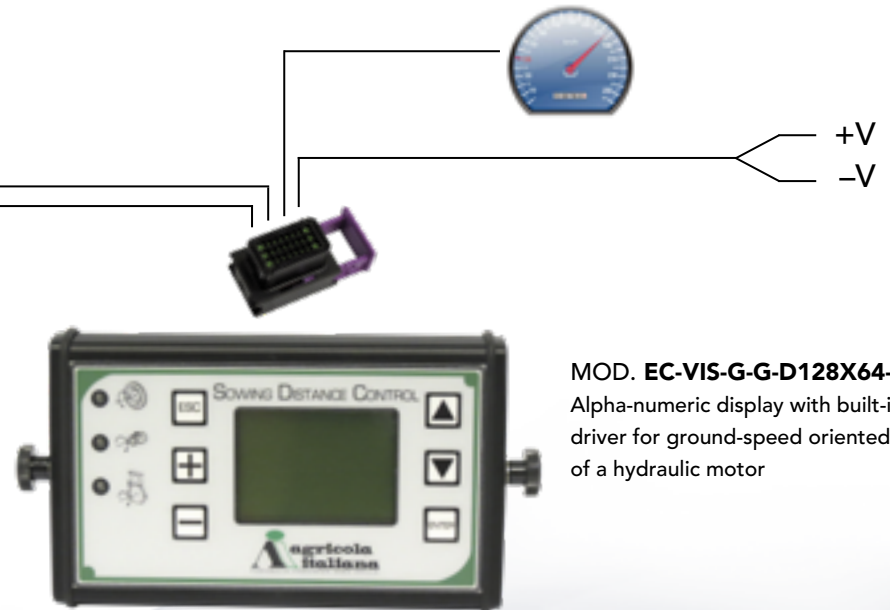
+V
-V

VALV-O-MATIC SINGLE-FUNCTION CONTROL VALVE

FLANGE-MOUNTED 3 WAY, PRESSURE COMPENSATED PROPORTIONAL FLOW CONTROL VALVE



MOD. RFP-3WPC-E_2A-FLV
3 way, pressure compensated proportional flow control valve (FLANGED version)



MOD. EC-VIS-G-G-D128X64-M-C
Alpha-numeric display with built-in PWM driver for ground-speed oriented control of a hydraulic motor

SEEDER



VALV-O-MATIC SINGLE-FUNCTION CONTROL VALVE

FLANGE-MOUNTED 2 WAY OR 3 WAY LIFT & LOWER ELECTRO-HYDRAULIC PROPORTIONAL CONTROL FOR STACKERS



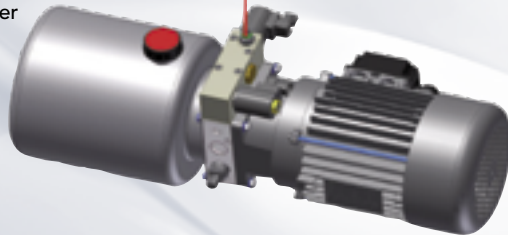
Proportional roller switch for manual lift & lower control

Lift & lower electronic control and PWM driver



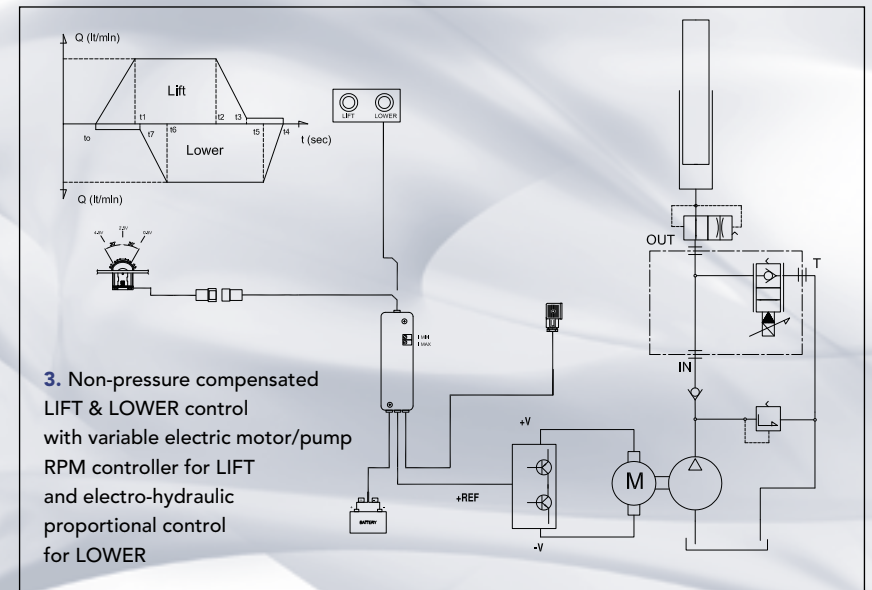
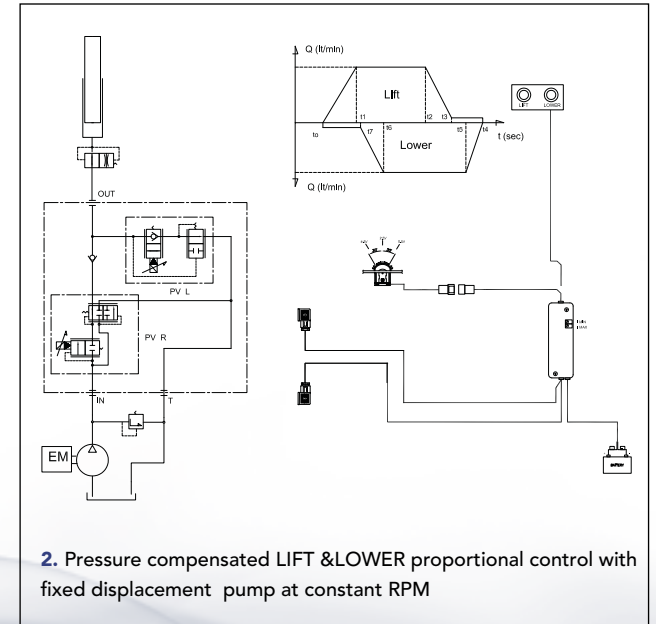
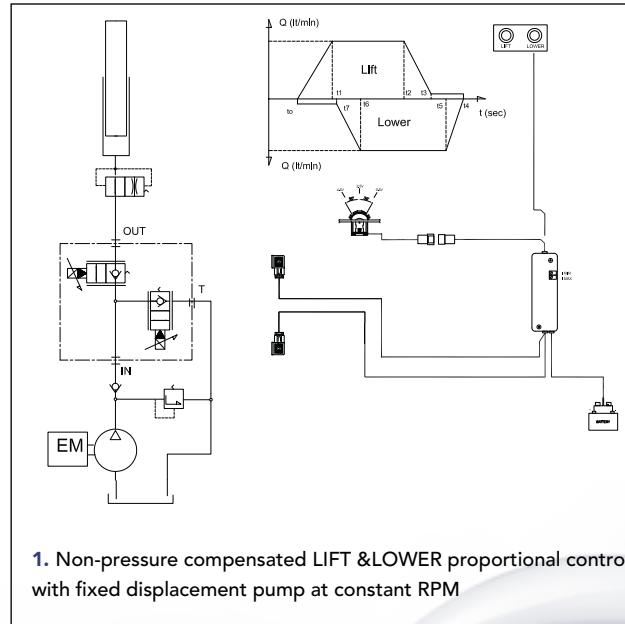
Power unit and proportional control manifold block

Single effect mast cylinder



STACKER

HYDRAULIC DIAGRAM



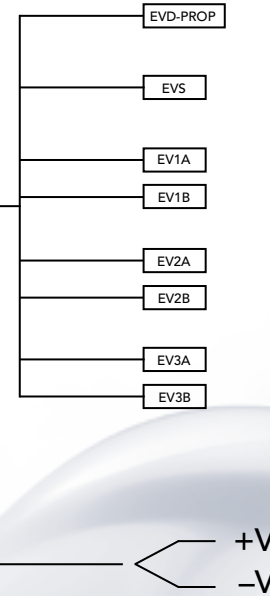
VALV-O-MATIC MULTI-FUNCTION CONTROL VALVE

COMBINED ON-OFF (FUNCTION SELECTION & DIRECTIONAL CONTROL) WITH PROPORTIONAL 2 WAY/METER-OUT CONTROL OF A SINGLE EFFECT MAST CYLINDER

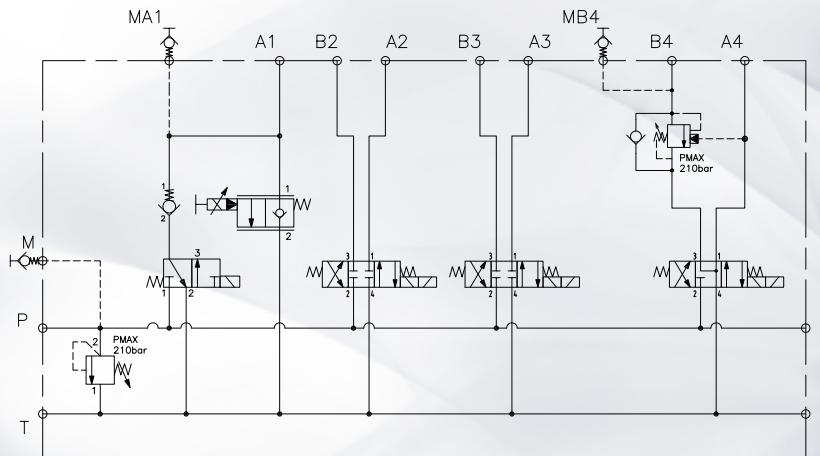
MOD. VOM-4F-32-FRS2G
Electro-hydraulic control manifold

MOD. JLP-FTC
Fingertip control levers

MOD. MMS-1521
MMS (Machine Management System)



HYDRAULIC DIAGRAM

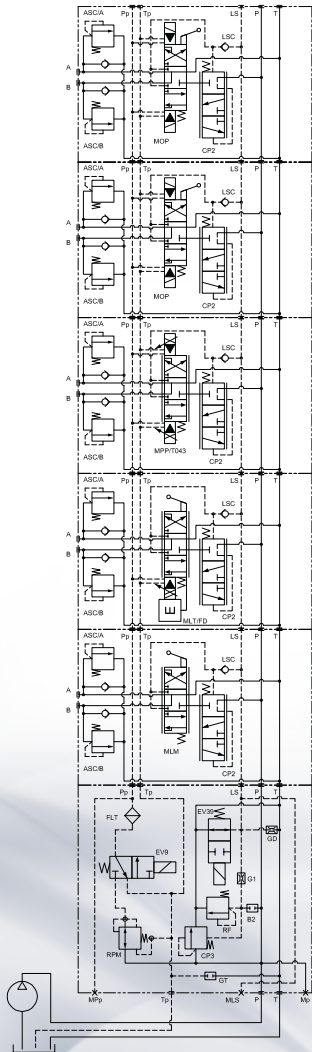


ELECTRIC FORK LIFT TRUCK

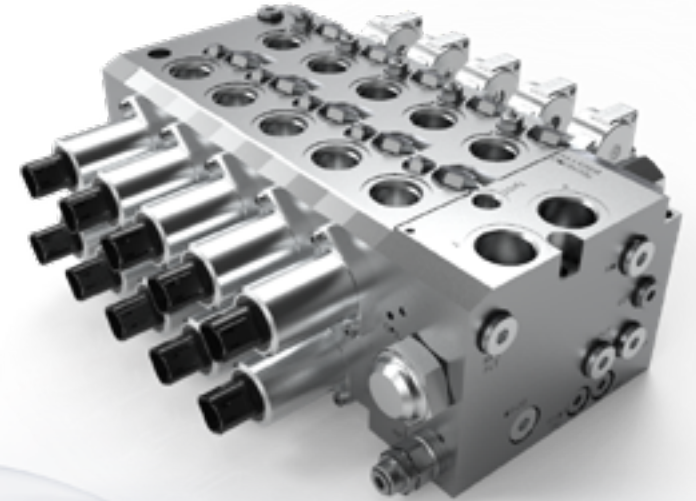
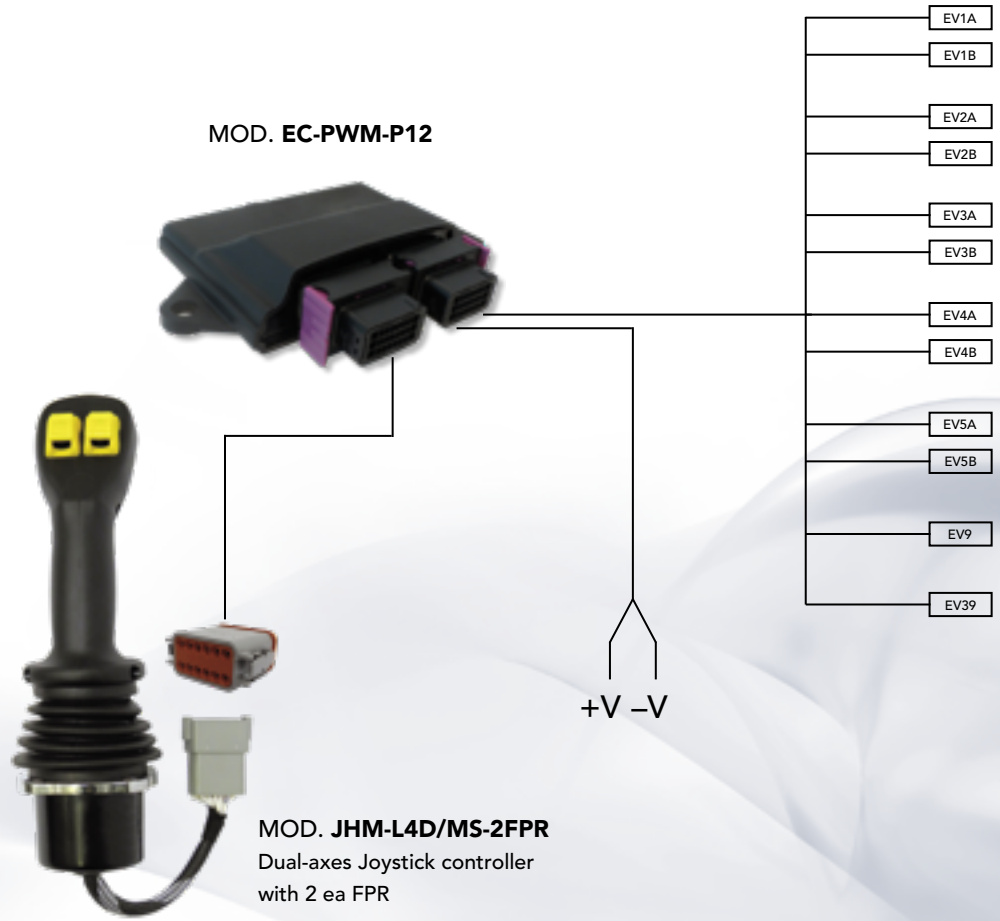


TDV100 ELECTRO-HYDRAULIC VALVE, OPEN LOOP PROPORTIONAL CONTROL WITH HEAVY DUTY MANUAL LEVERS

TDV100-LMPP-4F-DIRECTIONAL CONTROL SECTION WITH OPEN LOOP BY MEANS OF PROPORTIONAL PRESSURE REDUCING VALVE.
 THE TDV100 IS OPERATED BY DUAL AXIS JOYSTICKS WITH TWO PROPORTIONAL ROLLERS, MULTI-CHANNELL PWM DRIVER AND HARNESS



HYDRAULIC DIAGRAM



MOD. TDV100-LMPP
 Directional control section with open-loop by means of proportional pressure reducing valve (IP-DAR 43)

ROUGH TERRAIN FORK LIFT



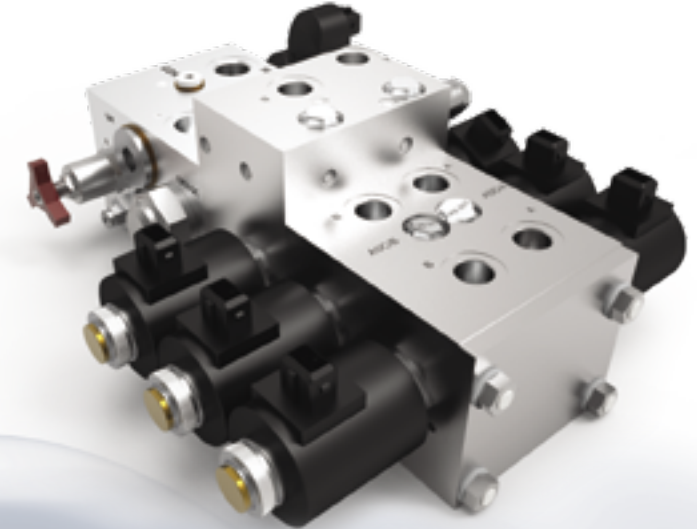
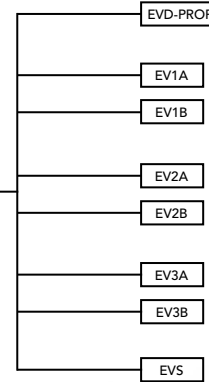
TECNORD DIRECTIONAL VALVE WITH DIRECT ACTING PROPORTIONAL CONTROL SOLENOIDS

MEDIUM-FLOW/MULTI-FUNCTION DIRECTIONAL-PROPORTIONAL CONTROL SYSTEM WITH LOAD SENSE FOR ELECTRIC FORK LIFT TRUCKS

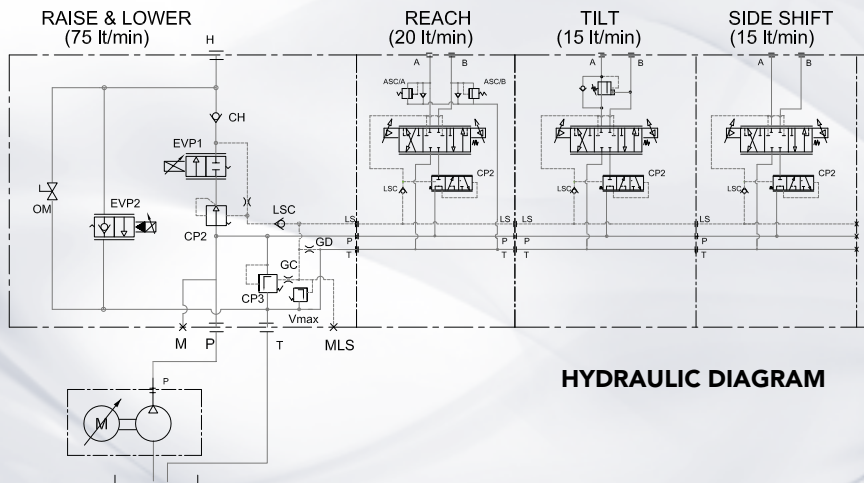
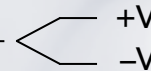
MOD. JLP-FTC
Fingertip control levers



MOD. MMS-1521
MMS (Machine Management System)



MOD. VOM-3F
Special MEDIUM FLOW inlet section for single effect LIFT & LOWER control



HYDRAULIC DIAGRAM

ELECTRIC SIDE-SHIFT FORK LIFT TRUCK



TECNORD DIRECTIONAL VALVE WITH DIRECT ACTING PROPORTIONAL CONTROL SOLENOIDS

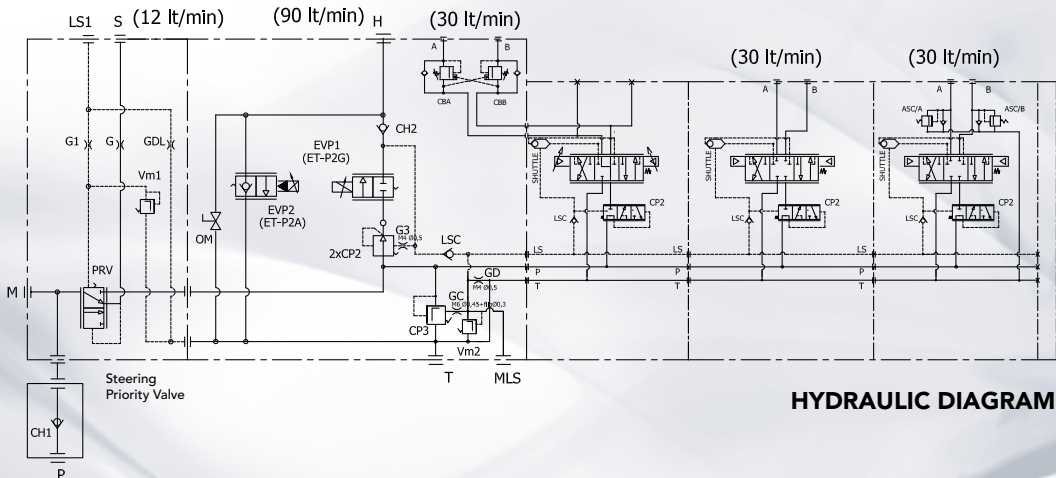
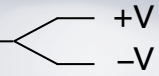
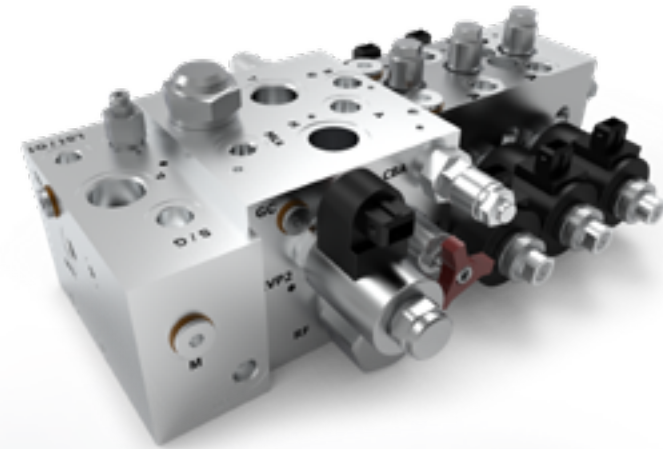
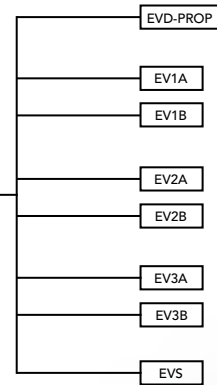
MEDIUM-FLOW/MULTI-FUNCTION DIRECTIONAL-PROPORTIONAL CONTROL SYSTEM WITH LOAD SENSE FOR ELECTRIC FORK LIFT TRUCKS

MOD. VOM-3F+1

Special HIGH FLOW inlet section for single effect LIFT & LOWER control



MOD. MMS-1521
MMS (Machine Management System)



DIESEL FORK-LIFT TRUCK



VALV-O-MATIC MULTI-FUNCTION CONTROL VALVE

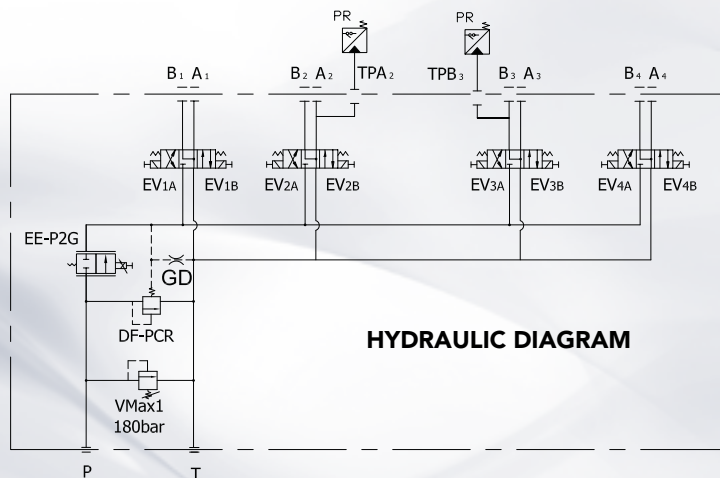
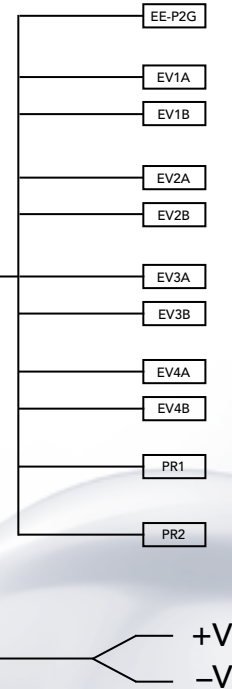
ELECTRO-HYDRAULIC MANIFOLD WITH 4 ON-OFF BIDIRECTIONAL SELECTOR VALVES

TRUCK-MOUNTED AERIAL PLATFORM

MOD. JLP (or FTC)
Fingertip control levers



MOD. MMS-1521
MMS (Machine Management System)



MOD. VOM-4F-32-FRS2G
Meter-in controlled valve block, combining
directional and proportional 4 sections
electro-hydraulic functions



VALV-O-MATIC MULTI-FUNCTION CONTROL VALVE

ELECTRO-HYDRAULIC/MULTI-FUNCTION ON-OFF CONTROL FOR SCISSOR LIFT APPLICATION

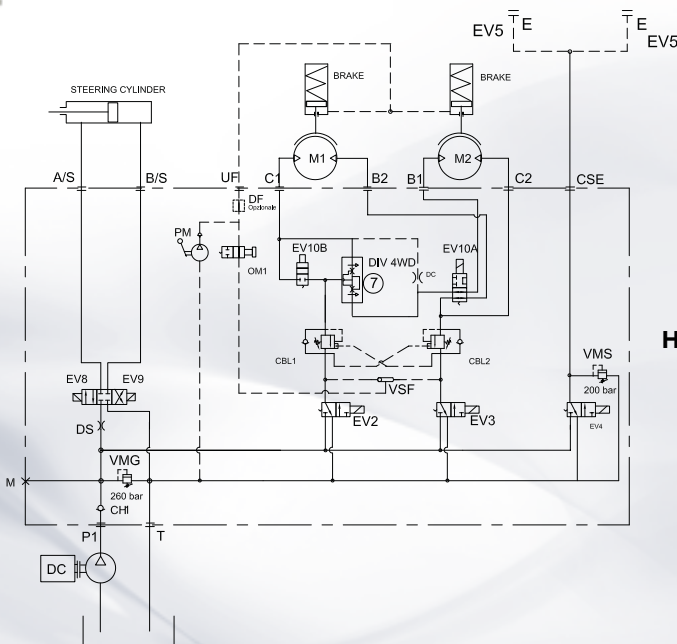
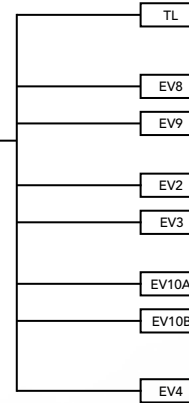
MOD. VOM-3F-TRACT



MOD. JMF-L2S

Single axis joystick with rocker switch for steering and variable output signal for electric traction motor

MOD. EC-PWM-08-MPC4
MMS (Machine Management System)



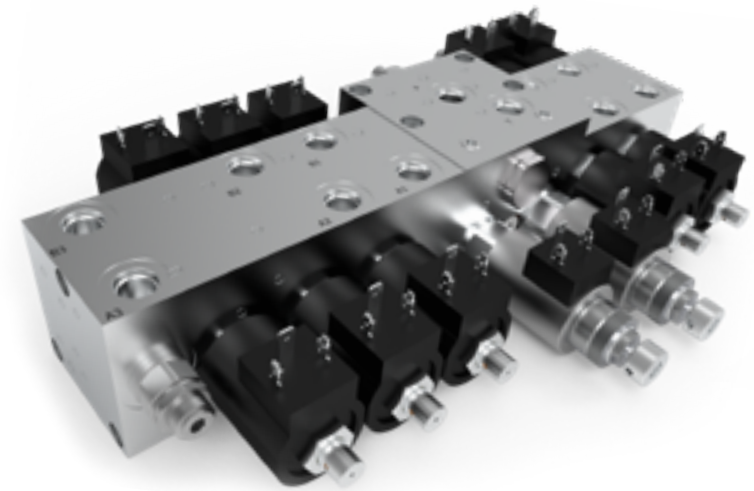
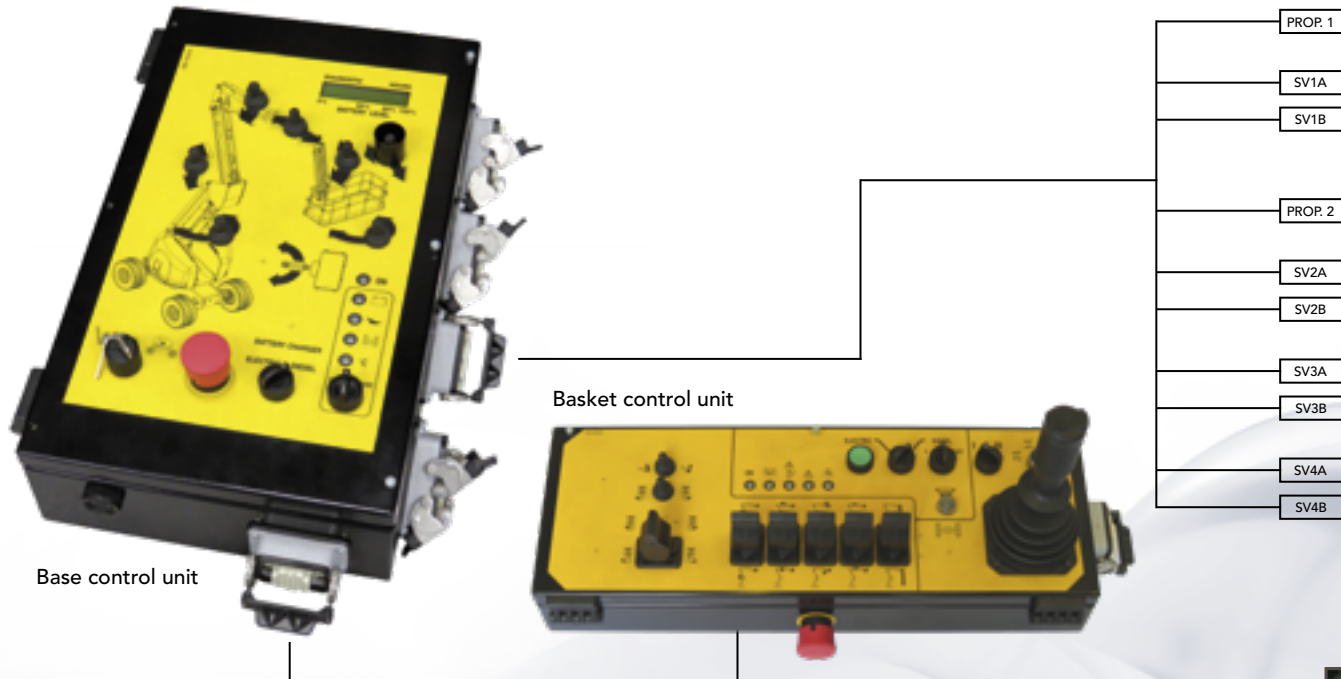
HYDRAULIC DIAGRAM

SCISSOR LIFT



VALV-O-MATIC MULTI-FUNCTION CONTROL VALVE

ELECTRO-HYDRAULIC 4-FUNCTIONS SYSTEM WITH DUAL PATTERN/METER-IN PROPORTIONAL CONTROL AND ON-OFF SELECTION OF BIDIRECTIONAL FUNCTIONS

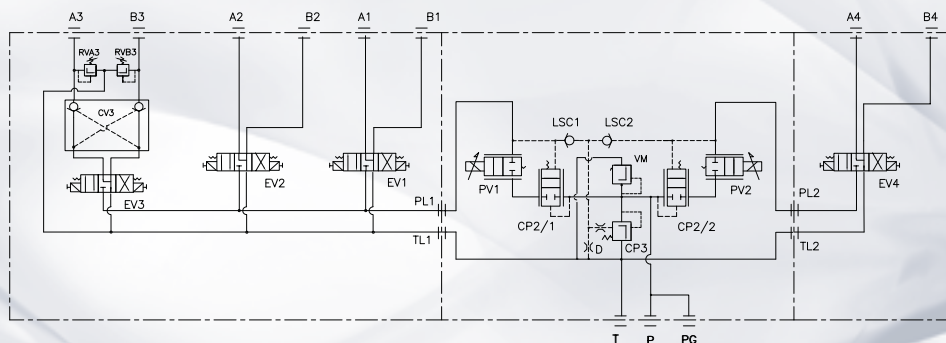


MOD. VOM 4F DUAL PROPORTIONAL
4-functions manifold block with solenoid-operated ON-OFF cartridge valves and DUAL PATTERN pressure compensated, 3 way proportional control valves system

SELF PROPELLED AERIAL PLATFORM



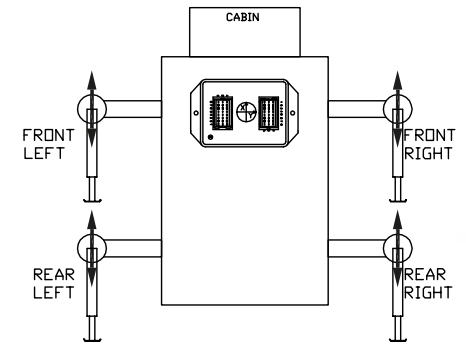
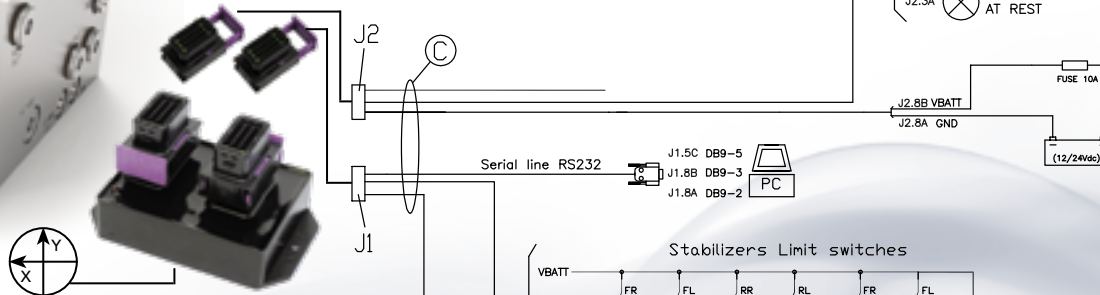
HYDRAULIC DIAGRAM



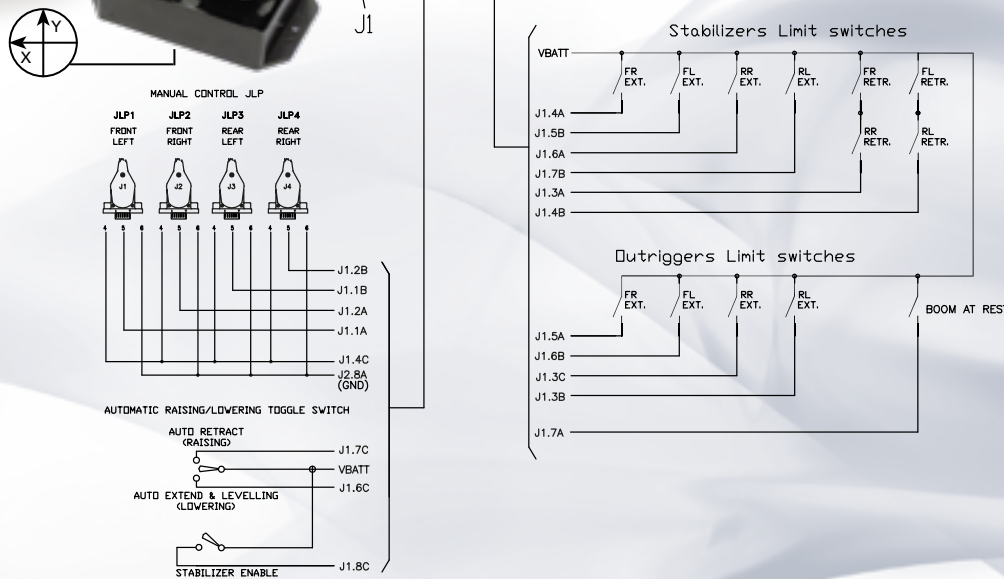
ELECTRO-HYDRAULIC PROPORTIONAL SELF-LEVELING SYSTEM WITH MULTIPLE OUTPUTS FOR COMBINED OUTRIGGERS AND STABILIZERS CONTROL OF TRUCK-MOUNTED AERIAL PLATFORMS



MOD. MMS-2218
Electronic control unit with built-in leveling sensor



MOD. TDV100-LMFD
Proportional directional systems with electro-hydraulic proportional actuator and built-in electronics



TRUCK-MOUNTED PLATFORM



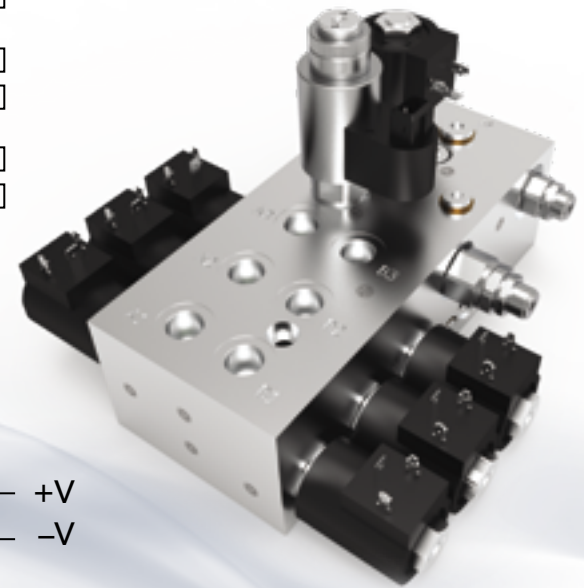
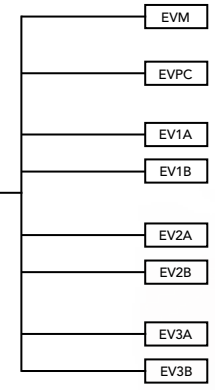
VALV-O-MATIC MULTI-FUNCTION CONTROL VALVE

COMBINED ON-OFF (FUNCTION SELECTION & DIRECTIONAL CONTROL)
WITH PROPORTIONAL 3 WAY/METER-IN CONTROL OF PUMP FLOW

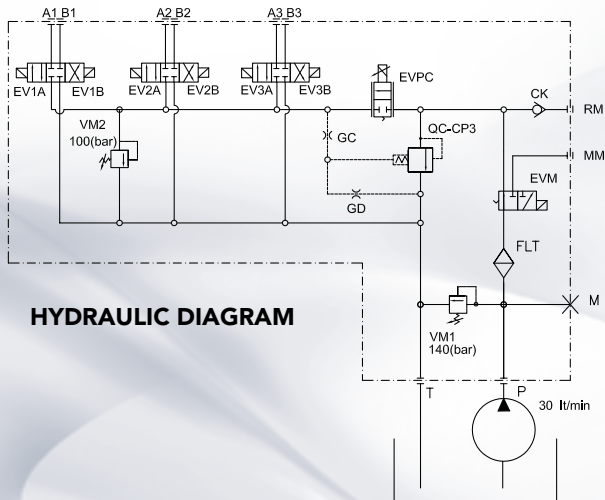
MOD. JHM-L4C-MG-A4P9
Multi-function, dual axes joystick with 4 push buttons for function selection



MOD. EC-MMS-1012-H
MMS (Machine Management System)



MOD. VOM-3F-32-1M
3 bidirectional functions with 3 way proportional pressure compensated meter-in control of pump flow and a 3 way-2 pos. flow diverter to feed a hydraulic motor in series connection with the other functions



HYDRAULIC DIAGRAM

FRONT AND REAR IMPLEMENTS FOR VINEJARD TRACTORS



AG TRIMMERS & STRIPPERS



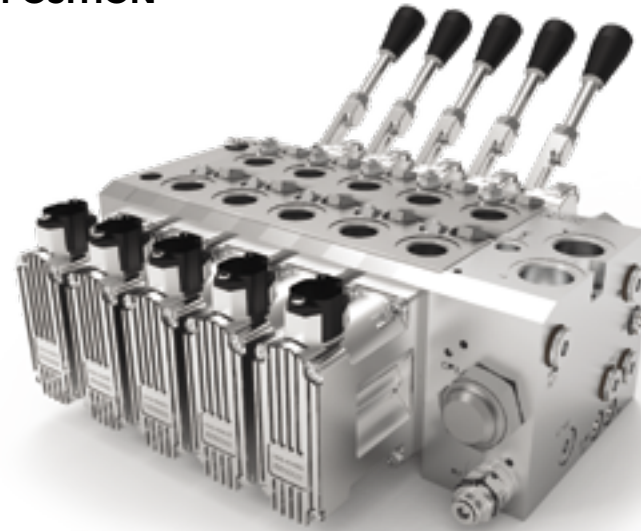
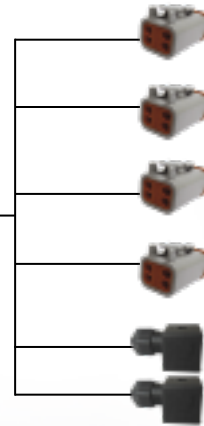
TDV100 TECNORD DIRECTIONAL VALVE WITH MLT/FD5 CLOSED LOOP POSITION ACTUATOR SYSTEM

TDV100-MLT-4F DIRECTIONAL/PROPORTIONAL STACKABLE CONTROL VALVE WITH LOAD SENSE AND MLT/FD5-CLOSED LOOP/PILOT OPERATED REMOTE CONTROL SYSTEM

MOD. TDV100-LMFD
Electro-hydraulic proportional actuators with built-in electronics allow direct connection with in-cabin remote control joysticks

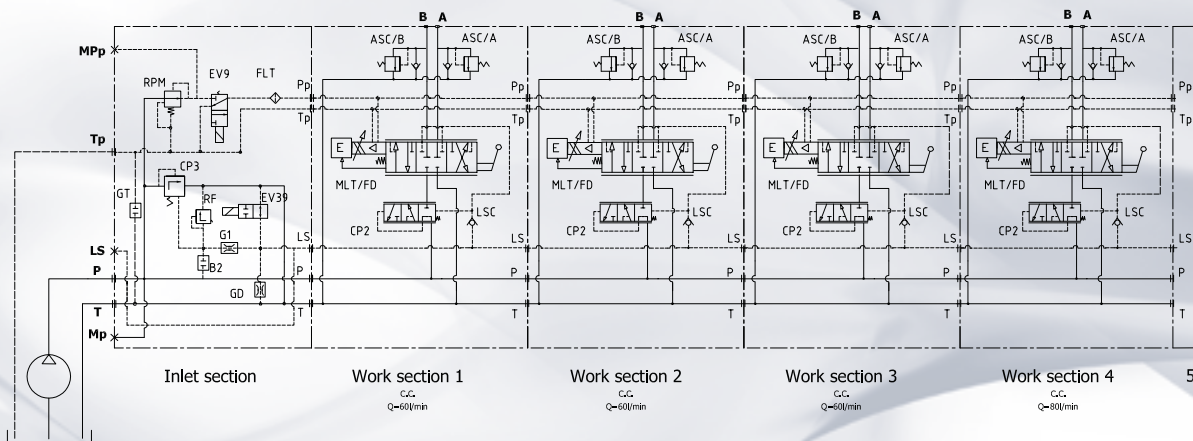
MOD. JLP-FTC
Fingertip control levers

MOD. MMS-1521
MMS (Machine Management System) for individual function tune-up



+V
-V

HYDRAULIC DIAGRAM



STIFF-BOOM CRANES



RETROFITTING CONTROL SYSTEM

MLT/CE16 ELECTRO-HYDRAULIC REMOTE CONTROL SYSTEM FOR TRUCK MOUNTED/KNUCKLE BOOM CRANES. THE SYSTEM IS EQUIPPED WITH LMI (RATED CAPACITY INDICATOR) FOR OVERTURNING MOMENT CONTROL



LMI SERIES
Electronic load limiter device

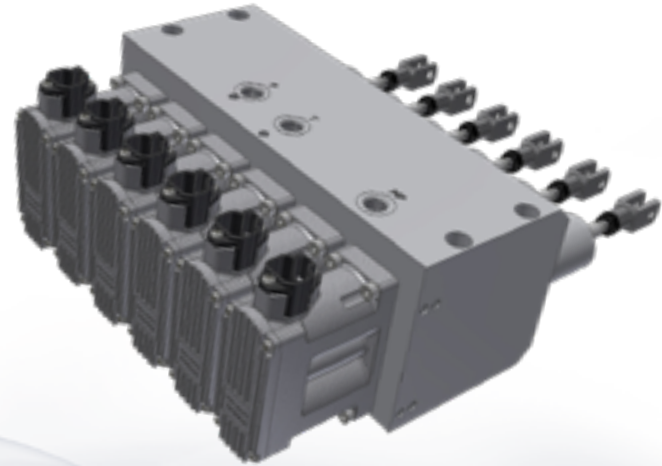


MOD. PTM-4F-CAN-2G4
Multifunction proportional radio control system
2.4 GigaHertz transceiver radio

MOD. RX-CAN-2G4
CANbus radio receiver



MOD. MLT/CE16
Hydraulically operated push-pull type servo-piston rods for mechanical linkage to the spools of the original manual control system



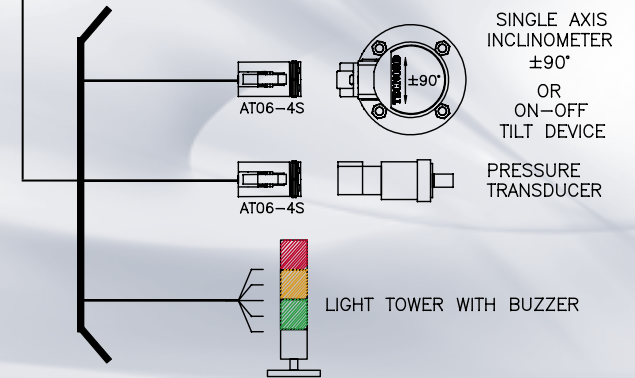
EMERGENCY BYPASS



CRANES



BOOM EQUIPMENT



VALV-O-MATIC MULTI-FUNCTION CONTROL VALVE

COMBINED ON-OFF (FUNCTION SELECTION & DIRECTIONAL CONTROL) WITH PROPORTIONAL 3 WAY/METER-IN CONTROL OF PUMP FLOW AND 4 ON/OFF FUNCTIONS METER-IN SHW TRANSMITTER

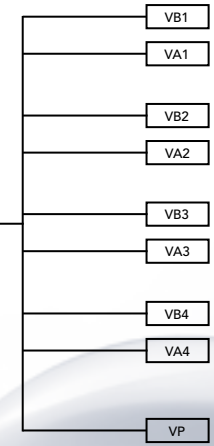


MOD. RC-SHW-4F
Single-hand radio controller with CANbus interface

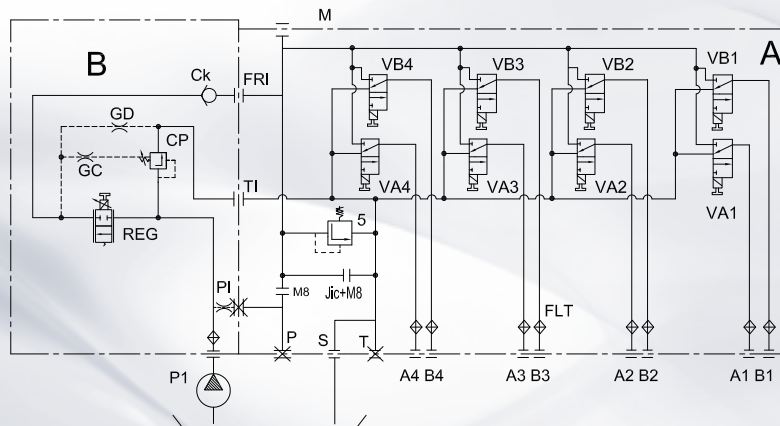
MOD. RX-CAN-2G4
CANbus radio receiver



MOD. EC-MMS-0713-H



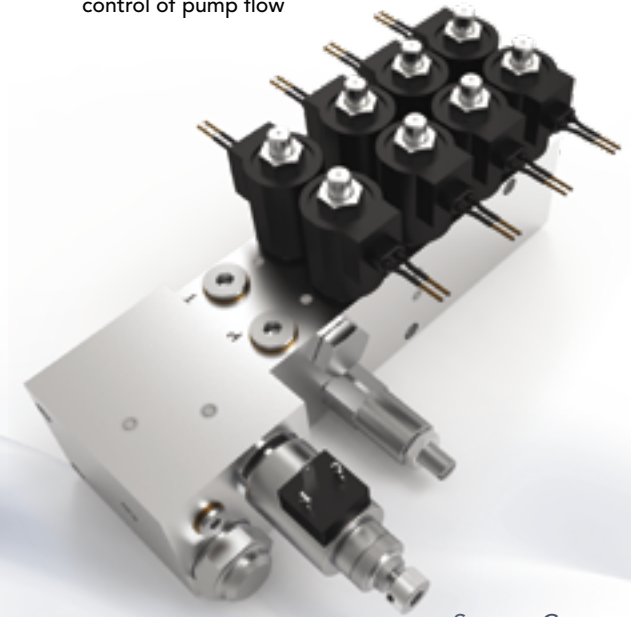
+V
-V



HYDRAULIC DIAGRAM

MOD. VOM-AF-32

Electro-hydraulic manifold block with 4 ea ON-OFF bidirectional selector valves and 3 way, pressure compensated flow regulator for meter-in control of pump flow



SERVICE CRANE



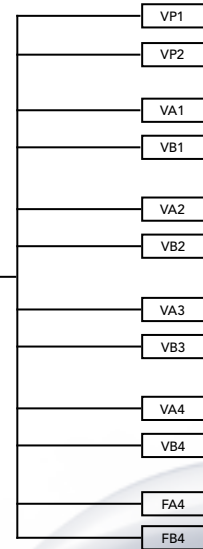
COMPLETE ELECTRO-HYDRAULIC CONTROL SYSTEM FOR MOWER/EDGE CUTTER MACHINES

MOD. VOM-AF-DUAL-PROP.

4-functions manifold block with solenoid-operated ON-OFF cartridge valves and DUAL PATTERN pressure compensated, 3 way proportional control valve system

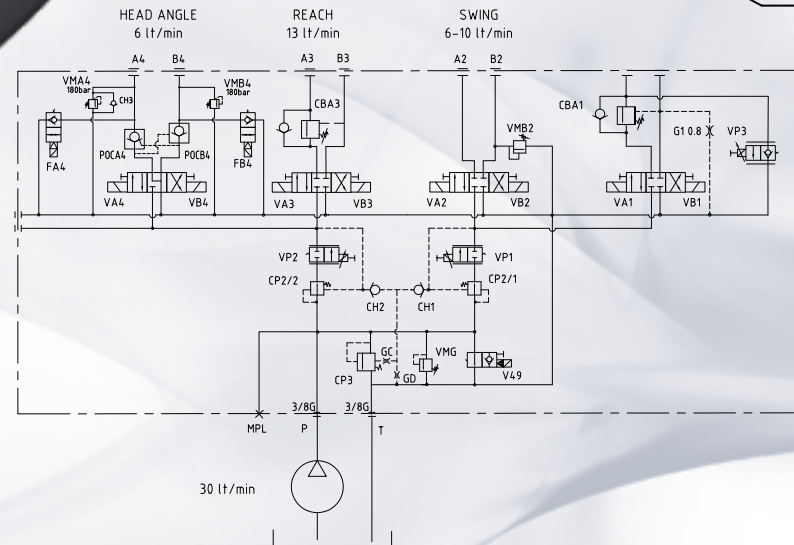


MOD. MMS-1521
MMS (Machine Management System)



+V
-V

HYDRAULIC DIAGRAM



EDGE CUTTERS



SALT SPREADERS

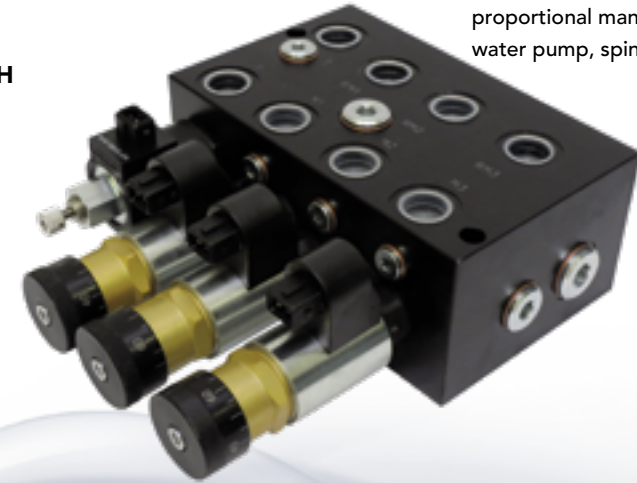
ECOMATIC SYSTEM - GROUND-SPEED ORIENTED/CLOSED LOOP CONTROL SYSTEM FOR DE-ICING SALT & CHEMICALS SPREADERS



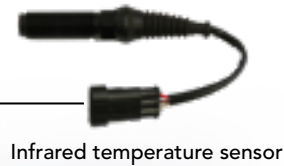
MOD. ECOMATIC SYSTEM
Ground-speed oriented spreading control system



MOD. EC-SNR-EOM-H
End-off material sensor



MOD. VOM 3F SERIES
3-functions pressure compensated proportional manifold for auger, water pump, spinner

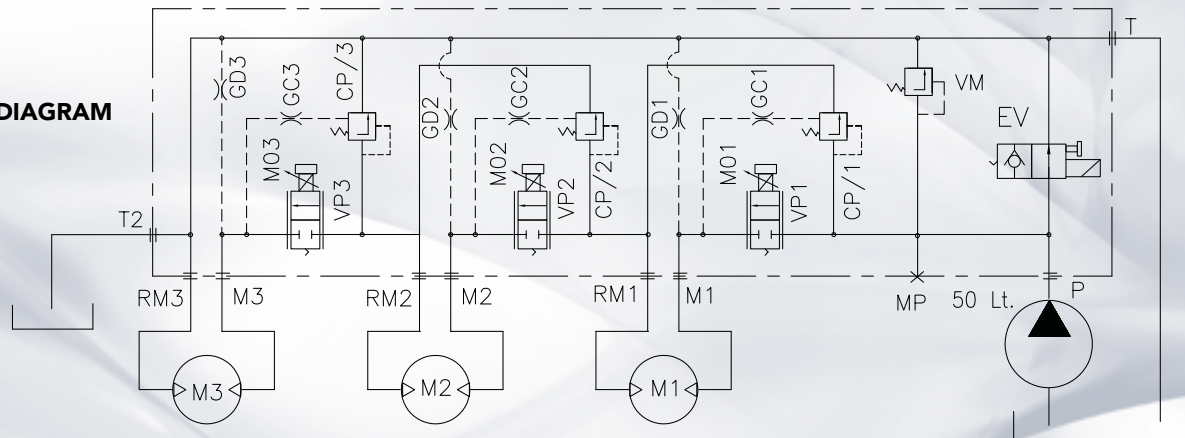


Infrared temperature sensor



+V
-V

HYDRAULIC DIAGRAM

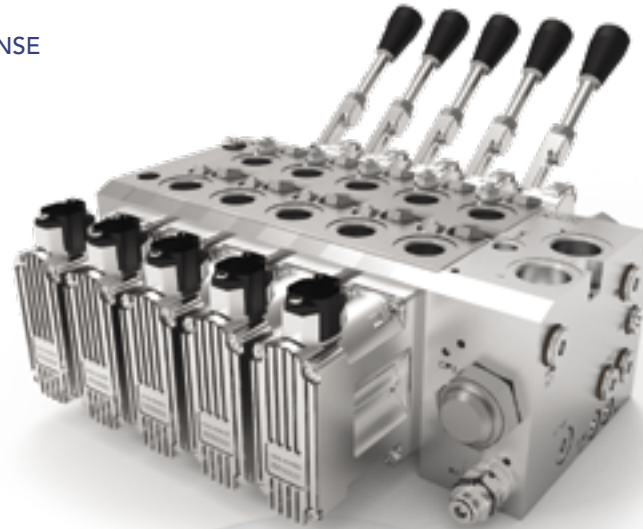
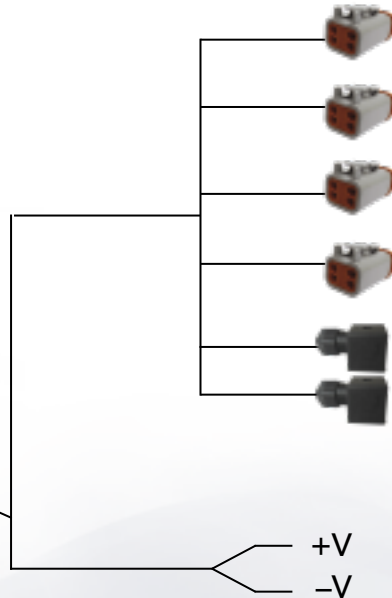


SALT SPREADER

TDV100 TECNORD DIRECTIONAL VALVE WITH MLT/FD5 CLOSED LOOP POSITION ACTUATOR SYSTEM

TDV100-MLT-4F DIRECTIONAL/PROPORTIONAL STACKABLE CONTROL VALVE WITH LOAD SENSE AND MLT/FD5-CLOSED LOOP/PILOT OPERATED REMOTE CONTROL SYSTEM

MOD. JHM

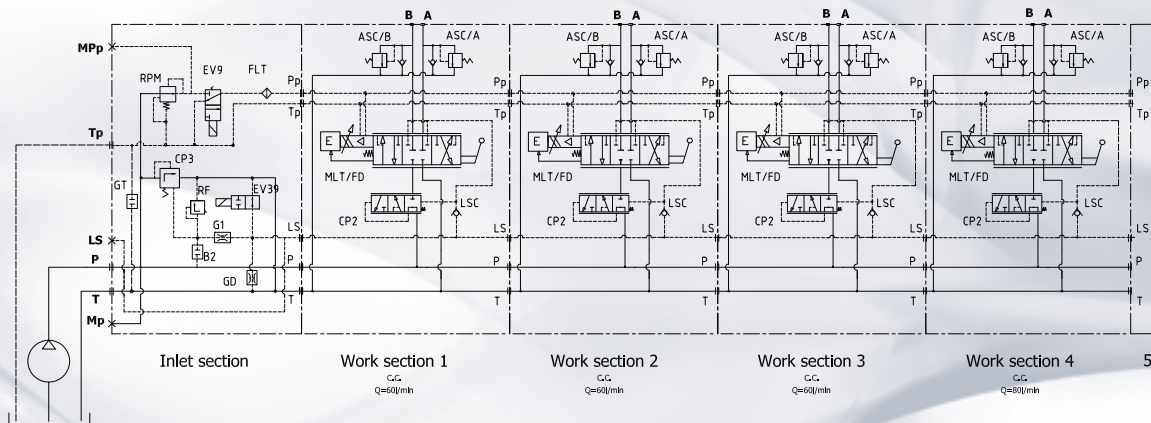


MOD. TDV100-MLFD
Proportional directional systems with electro-hydraulic proportional actuator and built-in electronics

MEDIUM-SIZE TELEHANDLERS

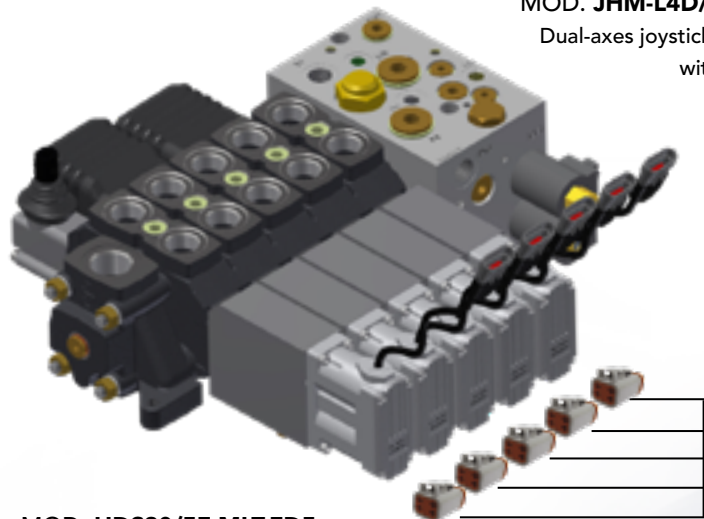


HYDRAULIC DIAGRAM



CROSS-BRAND CONTROL VALVE WITH MLT/FD5 CLOSED LOOP PROPORTIONAL ACTUATOR SYSTEM

HDS30/LARGE FLOW-DIRECTIONAL/PROPORTIONAL STACKABLE CONTROL VALVE WITH LOAD SENSE AND MLT/FD5-CLOSED LOOP/PILOT OPERATED REMOTE CONTROL SYSTEM



MOD. JHM-L4D/MS-2FPR
Dual-axes joystick controller with 2 ea FPR



MOD. EC-VIS-GC
Graphic display unit

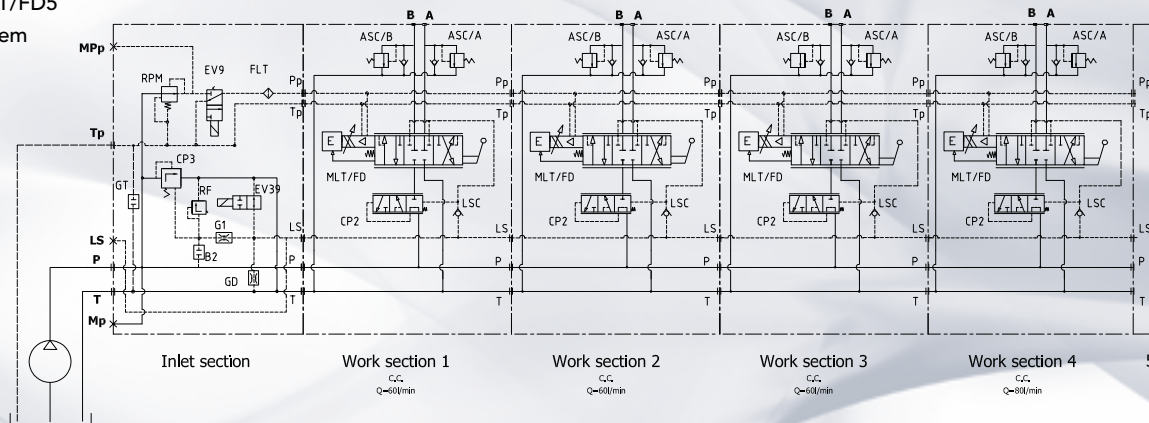


MOD. MMS-1521
MMS (Machine Management System) for individual function tune-up

+V
-V

MOD. HDS30/5F-MLT-FD5

Large-flow / 5-functions directional/proportional control valve with load-sense and MLT/FD5 closed loop proportional control system



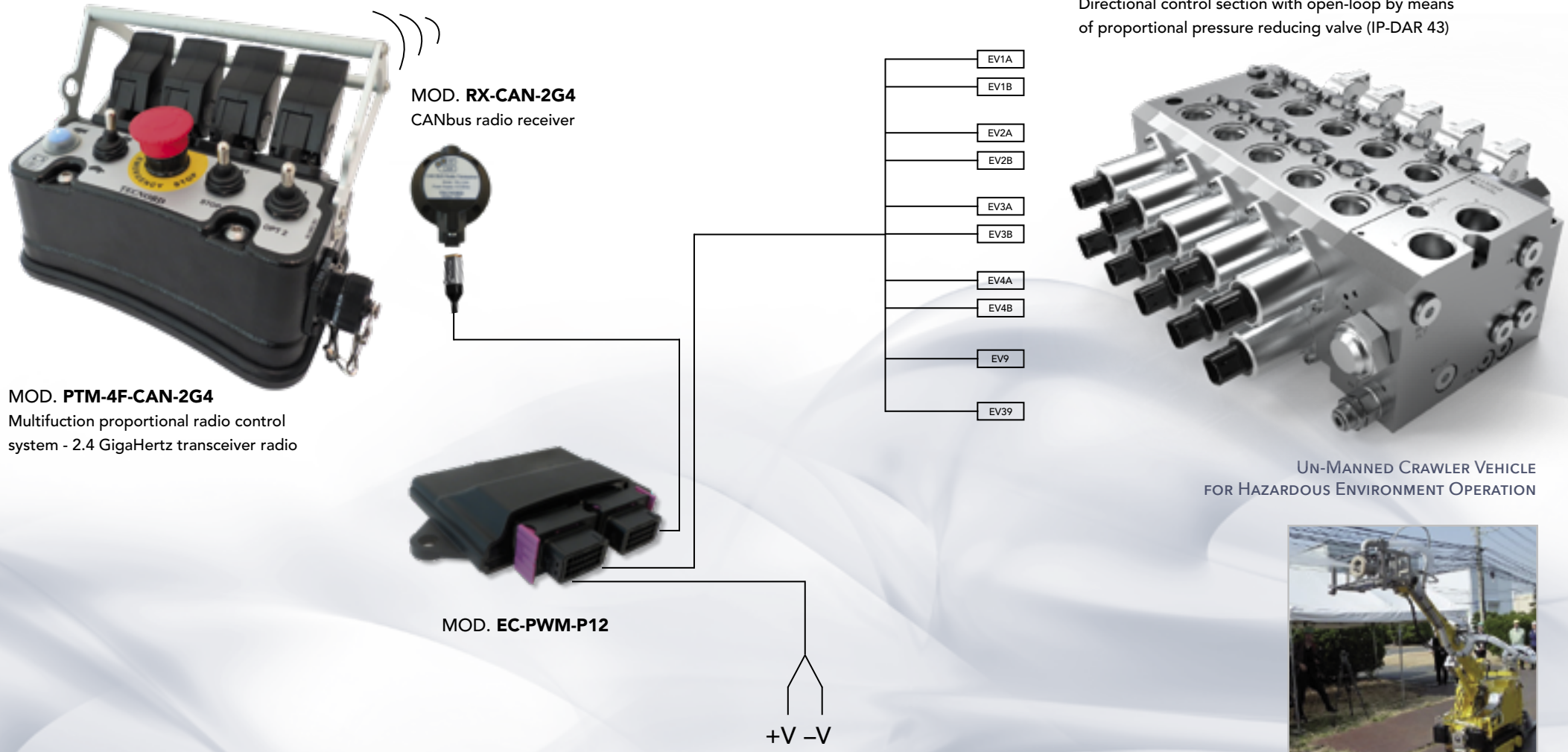
HYDRAULIC DIAGRAM



TELEHANDLERS

TDV100 TECNORD DIRECTIONAL VALVE WITH MPP OPEN LOOP POSITION ACTUATOR SYSTEM

TDV100-MPP-4F-DIRECTIONAL/PROPORTIONAL STACKABLE CONTROL VALVE WITH LOAD SENSE MULTI-FUNCTION RADIO CONTROL SYSTEM 2.4 GHZ WITH CAN



A series of horizontal dotted lines for writing, overlaid on a background of light blue, flowing, abstract shapes.



TECNORD

Via Malavolti, 36 - 41122 Modena, Italy - Tel. +39 (059) 254895 - Fax +39 (059) 253512
mail: tecnord@tecnord.com



WWW.TECNORD.COM