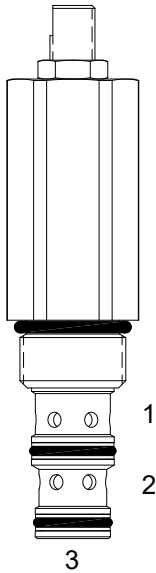


DF-FAP FULLY ADJUSTABLE PRIORITY FLOW CONTROL VALVE WITH BYPASS**DESCRIPTION**

10 size, 7/8-14 thread, "Delta" series, fully adjustable priority flow control valve with bypass.

OPERATION

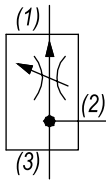
The DF-FAP allows pressure compensated flow from (3) to (1), regulated by the pressure present at (3). Excess flow bypasses out (2). Can be used as a restrictive pressure compensated flow control when the bypass port (2) is blocked.

FEATURES

- Hardened cage and spool for long life.
- Industry common cavity.



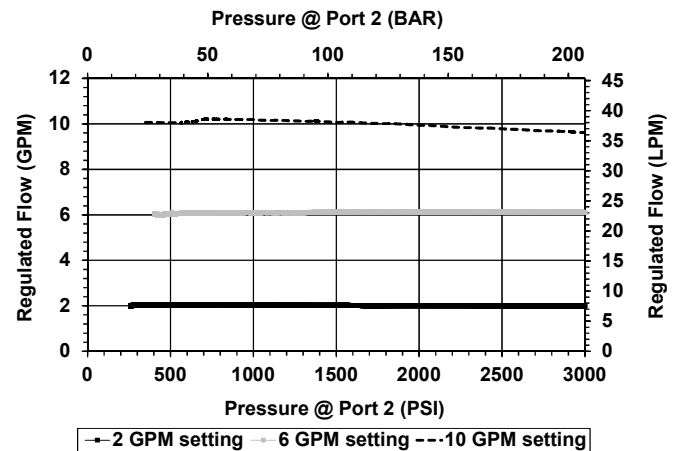
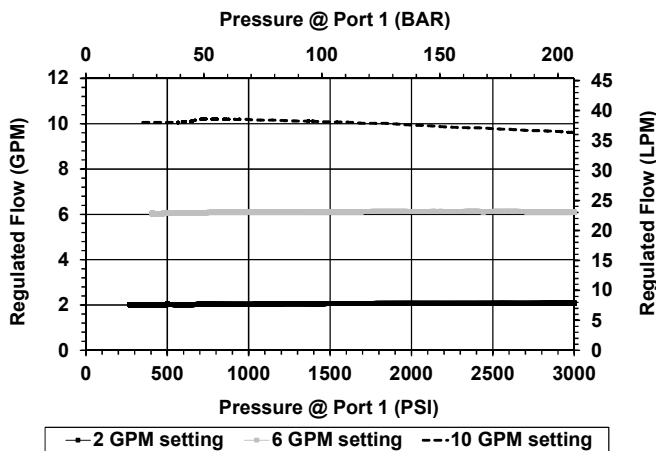
When used as a bypass flow control in applications where the priority flow will be blocked by external valving, bypass pressure drop will increase unless a small amount of leakage is provided for the priority port. Consult factory.

HYDRAULIC SYMBOL**PERFORMANCE**

Actual Test Data (Cartridge Only)

VALVE SPECIFICATIONS

Max Regulated Flow	10 GPM (38 LPM)
Rated Operating Pressure	3000 PSI (207 bar)
Viscosity Range	36 to 3000 SSU (3 to 647 cSt)
Filtration	ISO 18/16/13
Media Operating Temp. Range	-40° to 250°F (-40° to 120°C)
Weight	.40 lbs (.18 kg)
Operating Fluid Media	General Purpose Hydraulic Fluid
Cartridge Torque Requirements	30 ft-lbs (40.6 Nm)
Cavity	DELTA 3W
Cartridge Form Tool (Finishing)	40500001
Seal Kit	21191210



WARNING: the specifications/application data shown in our catalogs and data sheets are intended only as a general guide for the product described (herein). Any specific application should not be undertaken without independent study, evaluation, and testing for suitability.

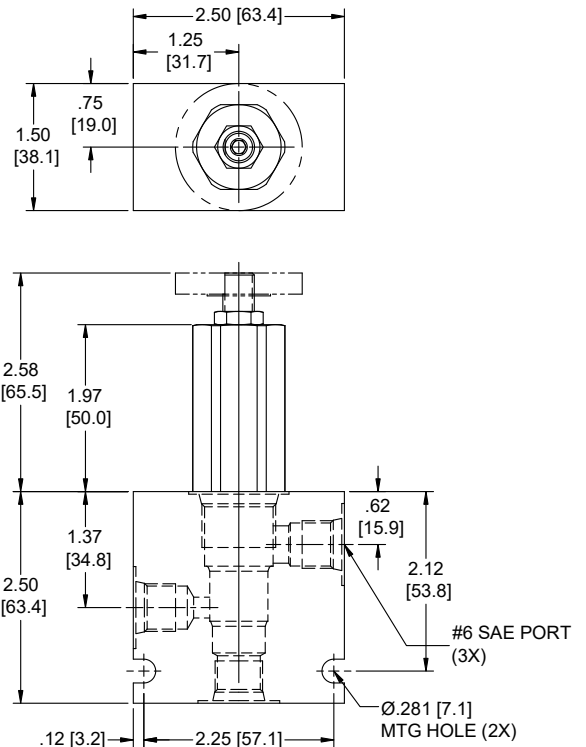
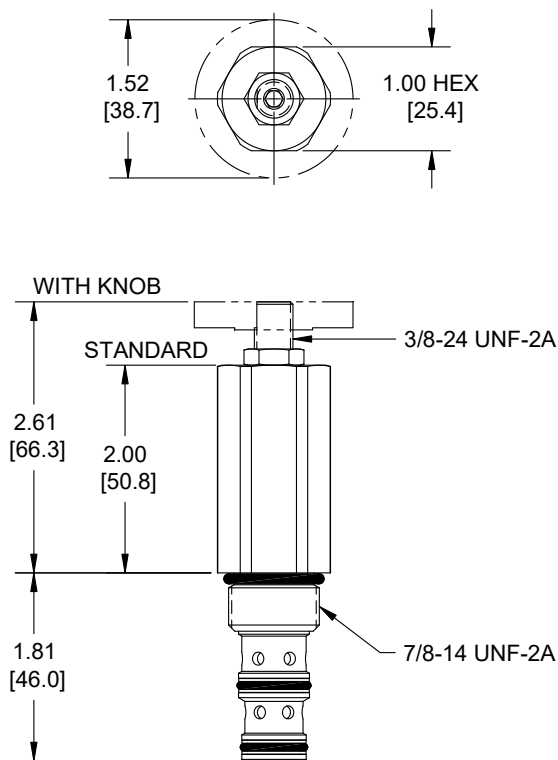


4484 Boeing Drive Rockford, IL 61109 • USA • Phone +1 (815) 397-6628 • Fax +1 (815) 397-2526
mail: delta@delta-power.com • www.delta-power.com

TECNORD

Via Malavolti, 36 • 41122 Modena • ITALY • Phone +39 (059) 254895 • Fax +39 (059) 253512
mail: tecnord@tecnord.com • www.tecnord.com

DIMENSIONS



Body Weight: .60 lbs (.27 kg)

ORDERING INFORMATION

DF-FAP - - - -

OPTIONS

Buna Standard **00**

Viton Standard **V0**

Buna, Knob **OK**

Viton, Knob **VK**

BODIES

Blank Without Body

N 3/4" NPTF Ports

S #12 SAE Ports

FLOW SETTING

XXXX 1 to 10 GPM

Preset & Tamper Proof

Example: 0005 - 5 GPM ±10%

W 6 / 2020

WARNING: the specifications/application data shown in our catalogs and data sheets are intended only as a general guide for the product described (herein). Any specific application should not be undertaken without independent study, evaluation, and testing for suitability.



4484 Boeing Drive Rockford, IL 61109 • USA • Phone +1 (815) 397-6628 • Fax +1 (815) 397-2526
mail: delta@delta-power.com • www.delta-power.com

TECNORD

Via Malavolti, 36 • 41122 Modena • ITALY • Phone +39 (059) 254895 • Fax +39 (059) 253512
mail: tecnord@tecnord.com • www.tecnord.com