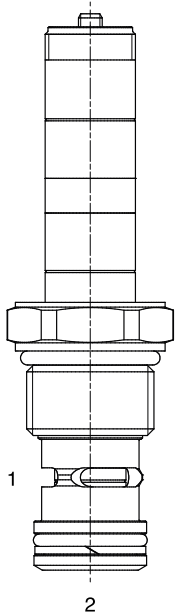


**ET-P2S 2 WAY NORMALLY CLOSED, PROPORTIONAL FLOW CONTROL VALVE**



**DESCRIPTION**

12 size, 1 1/16-12 thread, "Tecnord" series, solenoid operated, 2 way normally closed, bidirectional proportional flow control valve.

**OPERATION**

When de-energized the ET-P2S blocks flow at ports (1) and (2). When energized, the valve allows flow from (1) to (2) or from (2) to (1). Flow is proportional to the current applied to the coil, flow regulation happens in both directions, according to below graph. A compensator must be used to create a pressure compensated flow control function.

**OPERATION OF MANUAL OVERRIDE OPTION:** to override, turn the manual override screw counterclockwise. To release turn the manual override screw clockwise.

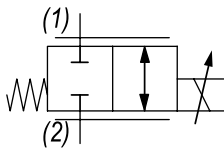
**FEATURES**

- Efficient wet-armature construction.
- Cartridges are voltage interchangeable.
- Industry common cavity.
- Unitized, molded coil design.
- Continuous duty rated solenoid.
- Optional coil voltages and terminations.



*Curves are attained with Tecnord QC-CP3 compensator.*

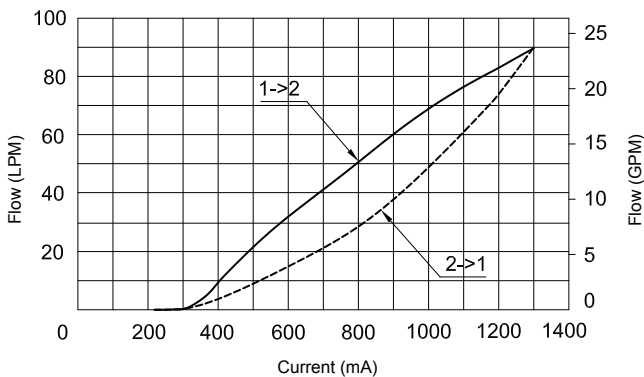
**HYDRAULIC SYMBOL**



**PERFORMANCE**

**Flow vs. Current**

Coil 12 VDC - Press. Drop = 14 bar - Oil 46 cSt (217 SSU) @ 50°C (122°F)



**VALVE SPECIFICATIONS**

Flow Range	See curves for various versions
Max System Pressure	3500 PSI (241 bar)
Leakage	Max 50 cc/min at 245 bar
Hysteresis	±3%
Viscosity Range	36 to 3000 SSU (3 to 647 cSt)
Filtration	ISO 18/16/13
Media Operating Temp. Range	-30°C / +100°C
Weight	.72 lbs (.32 kg)
Operating Fluid Media	General Purpose Hydraulic Fluid
Cartridge Torque Requirements	37 ft-lbs (50 Nm)
Coil Nut Torque Requirements	2-3 ft-lbs (3-4 Nm)
Cavity	TECNORD 2W
Cavity Tools Kit	
(form tool, reamer, tap)	40500032
Seal Kit	21191200

**COIL SPECIFICATIONS**

Current Supply Characteristics	PWM (Pulse Width Modulation)
Rated Current Range	400-1400 mA
PWM or Super-Imposed	
Dither Frequency	100-150 Hz
Coil Resistance (12 VDC)	7.2 Ohm ±5% at 68°F (20°C)

**WARNING:** the specifications/application data shown in our catalogs and data sheets are intended only as a general guide for the product described (herein). Any specific application should not be undertaken without independent study, evaluation, and testing for suitability.

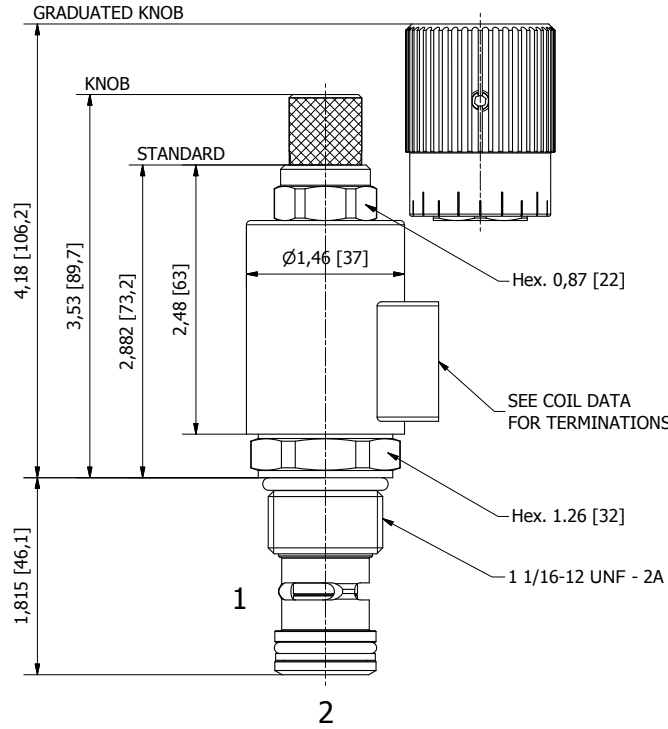
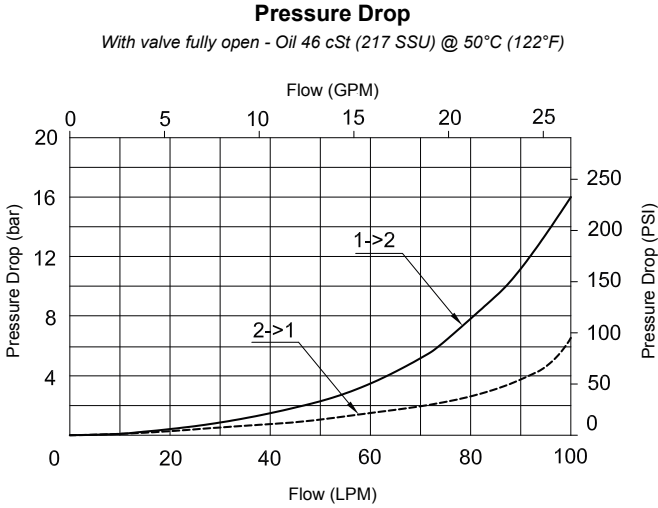


4484 Boeing Drive Rockford, IL 61109 • USA • Phone +1 (815) 397-6628 • Fax +1 (815) 397-2526  
 mail: delta@delta-power.com • www.delta-power.com



Via Malavolti, 36 • 41122 Modena • ITALY • Phone +39 (059) 254895 • Fax +39 (059) 253512  
 mail: tecnord@tecnord.com • www.tecnord.com

**DIMENSIONS**



(for bodies style and sizes see section "Accessories")

**ORDERING INFORMATION**

Approximate Coil Weight: .47 lbs (.21 kg)

**ET-P2S - - - -**

<p><b>OPTIONS</b></p> <p>Buna Standard <b>C0</b> Up to 90 l/min          Buna, Screw Type Override (Knob) <b>CS</b> Up to 90 l/min          Buna, Screw Type Override (Grad. Knob) <b>CK</b> Up to 90 l/min</p>	<p><b>"F" COIL TERMINATION</b></p> <p><b>HC</b> DIN 43650 (Hirschmann)  <b>DI</b> Deutsch-Integral DT04-2P  <b>JT</b> AMP Jr. Timer</p>	<p><b>BODIES</b></p> <p><b>Blank</b> Without Body  <b>N</b> 3/4" BSP Ports  <b>S</b> #8 SAE Ports</p> <p><b>VOLTAGE</b></p> <p><b>12</b> 12 VDC  <b>24</b> 24 VDC</p>
---	---	---

**NOTES:** 1) Flows refer to a 14 bar Delta P  
2) For other seals, consult factory

WARNING: the specifications/application data shown in our catalogs and data sheets are intended only as a general guide for the product described (herein). Any specific application should not be undertaken without independent study, evaluation, and testing for suitability.