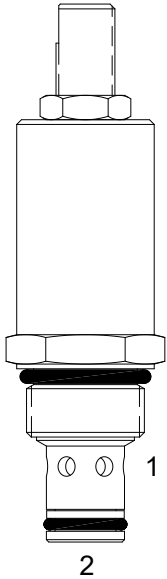


PB-FCC ADJUSTABLE FLOW CONTROL VALVE, PRESSURE COMPENSATED**DESCRIPTION**

8 size, 3/4-16 thread, "Power" series, pressure compensated flow control valve.

OPERATION

The PB-FCC maintains a constant flow rate out of (1) regardless of load pressure changes in the circuit downstream of (1).

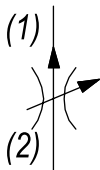
The adjustable control differential spring load can be set to customer flow specification (see options for ranges).

The valve begins to respond to load changes when the flow through the valve creates a pressure differential from (2) to (1) across the control orifice. Consult graph to see regulation at high and low adjustment settings.

Reverse flow (1) to (2) returns through the control orifice and is non-compensated. The regulated flow increases from low to high with clockwise rotation of the knob.

FEATURES

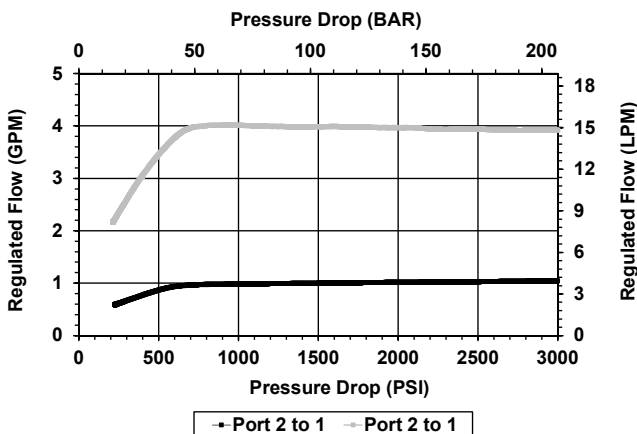
- Hardened parts for long life.
- Industry common cavity.

HYDRAULIC SYMBOL

Best stability is obtained with adjustment at highest flow.

PERFORMANCE

Actual Test Data (Cartridge Only)

**VALVE SPECIFICATIONS**

Nominal Flow	5 GPM (19 LPM)
Rated Operating Pressure	3500 PSI (241 bar)
Viscosity Range	36 to 3000 SSU (3 to 647 cSt)
Filtration	ISO 18/16/13
Media Operating Temp. Range	-40° to 250°F (-40° to 120°C)
Weight	.26 lbs (.12 kg)
Operating Fluid Media	General Purpose Hydraulic Fluid
Cartridge Torque Requirements	25 ft-lbs (34 Nm)
Cavity	POWER 2W
Cavity Form Tool (Finishing)	40500005
Seal Kit	21191100

WARNING: the specifications/application data shown in our catalogs and data sheets are intended only as a general guide for the product described (herein). Any specific application should not be undertaken without independent study, evaluation, and testing for suitability.



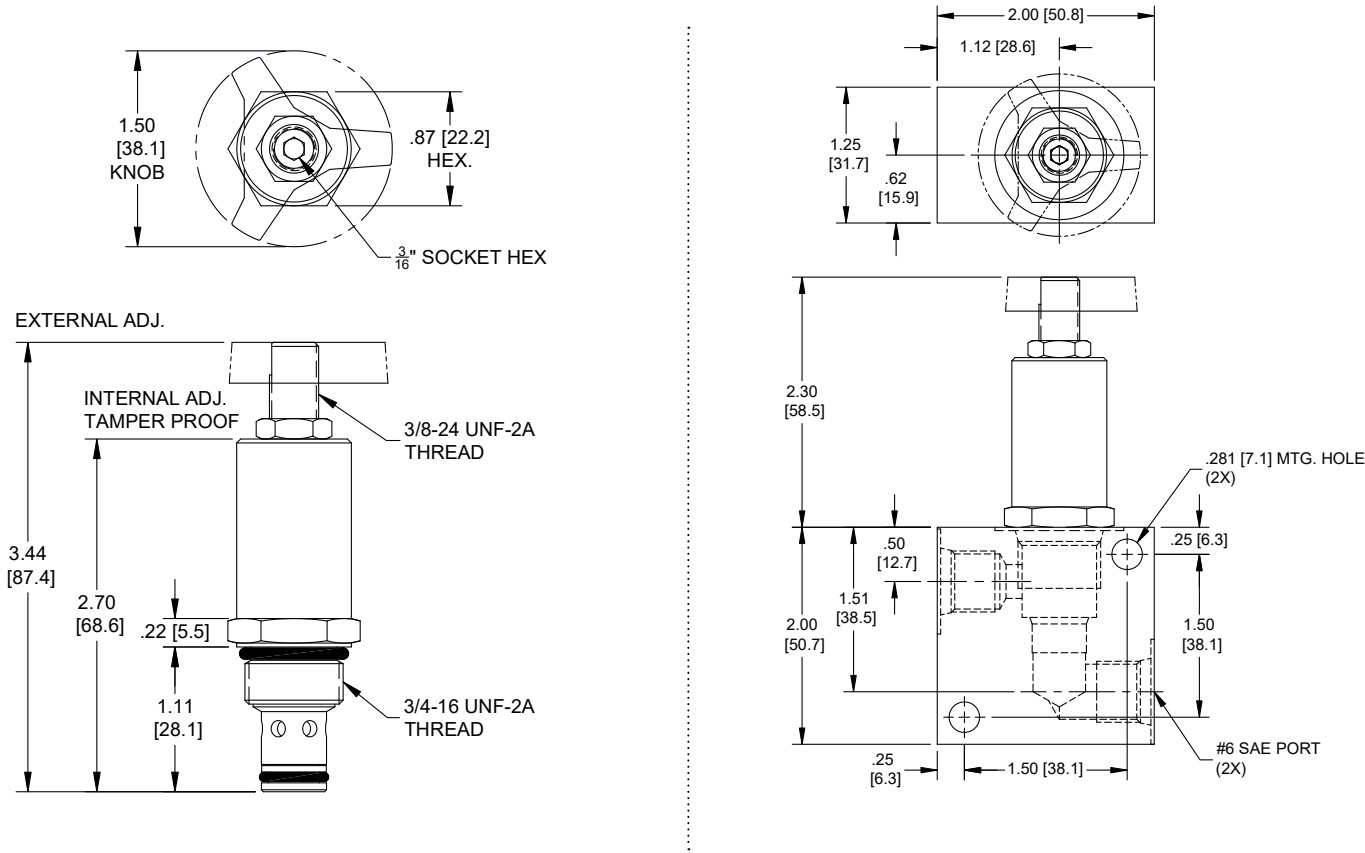
4484 Boeing Drive Rockford, IL 61109 • USA • Phone +1 (815) 397-6628 • Fax +1 (815) 397-2526
mail: delta@delta-power.com • www.delta-power.com

TECNORD

Via Malavolti, 36 • 41122 Modena • ITALY • Phone +39 (059) 254895 • Fax +39 (059) 253512
mail: tecnord@tecnord.com • www.tecnord.com

DIMENSIONS

NSIONS



Body Weight: .39 lbs (.18 kg)

ORDERING INFORMATION

PB-FCC

OPTIONS

- External Adjust w/Locknut, Buna 00
- External Adjust w/Locknut, Viton V0
- Knob, Buna 0K
- Knob, Viton VK
- Internal Adjust, Buna 0I
- Internal Adjust, Viton VI
- Tamper Proof, Buna 0T
- Tamper Proof, Viton VT

BODIES

- Blank
- N Without Body
- S 1/4" NPTF Ports

FLOW

- 0.45 .25 - .45 GPM
- 0.75 .45 - .75 GPM
- 1.25 .75 - 1.25 GPM
- 2.00 1.25 - 2.00 GPM
- 5.00 2.00 - 5.00 GPM

Tamper Proof

Fill in 4 Digit Flow Setting
Example: 02.0 - 2 GPM

W 6 / 2020

WARNING: the specifications/application data shown in our catalogs and data sheets are intended only as a general guide for the product described (herein). Any specific application should not be undertaken without independent study, evaluation, and testing for suitability.



4484 Boeing Drive Rockford, IL 61109 • USA • Phone +1 (815) 397-6628 • Fax +1 (815) 397-2526
mail: delta@delta-power.com • www.delta-power.com

TECNORD

Via Malavolti, 36 • 41122 Modena • ITALY • Phone +39 (059) 254895 • Fax +39 (059) 253512
mail: tecnord@tecnord.com • www.tecnord.com